

# Tampa International Airport

## Monthly Noise Monitoring Office Report

### March 2023



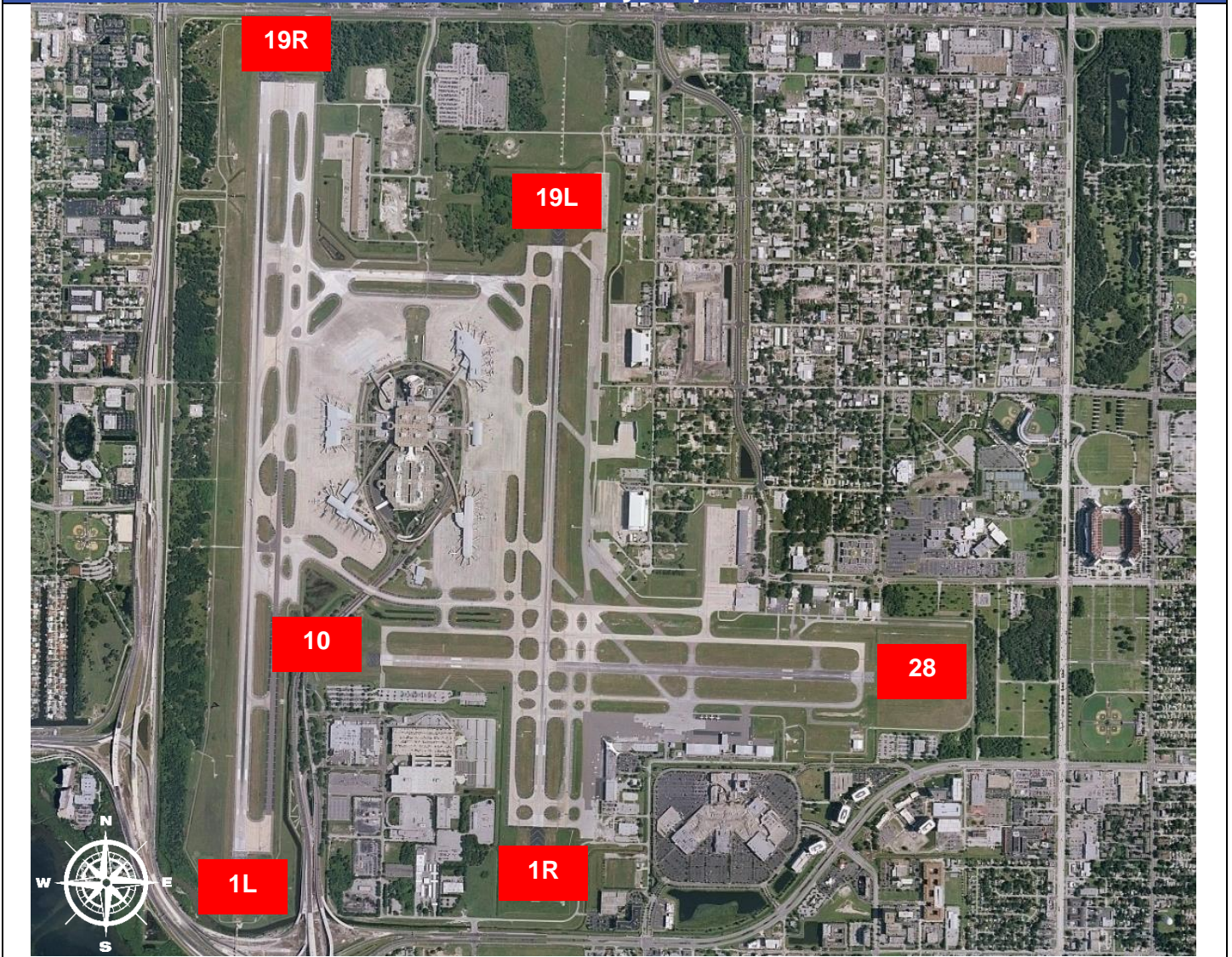
Monthly Noise Report	
Operational Impacts	Community Outreach
<ul style="list-style-type: none"> <li>Runway 1L-19R closed on March 14<sup>th</sup>, 2023, for various maintenance activities.</li> <li>Runway 1R-19L closed daily March 1<sup>st</sup> and 15<sup>th</sup>, 2023, for various maintenance activities.</li> </ul>	<ul style="list-style-type: none"> <li>Two Community Noise Forum meetings were held on March 16<sup>th</sup>, 2023.</li> </ul>
For more information please visit: <a href="http://www.tampaairport.com/noise-abatement">www.tampaairport.com/noise-abatement</a> or call: (813) 870-7843	

Deviations		
North of Airport	West of Airport	South of Airport
1L / 1R Departures – Westbound Aircraft Turns Below 3,000 ft.	Runway 10-28 Arrivals / Departures	Runway 1R Jet Arrivals and Runway 19L Commercial Jet Departures
<b>Jet Aircraft Turns Below 3,000 ft.: 724</b> <b>Deviation Percentage of Total North Flow Departures: 16%</b> <b>Compliance: 84%</b>	<b>Total Runway 10 Jet Arrivals: 4</b> <b>Deviation Percentage of Total Jet Operations: .1%</b> <b>Compliance: 99.9%</b>	<b>Total Runway 1R Jet Landings: 489</b> <b>Total Runway 19L Commercial Jet Departures: 81</b> <b>Combined Deviation Percentage of Total Jet Operations****: 3%</b> <b>Combined Compliance****: 97%</b>

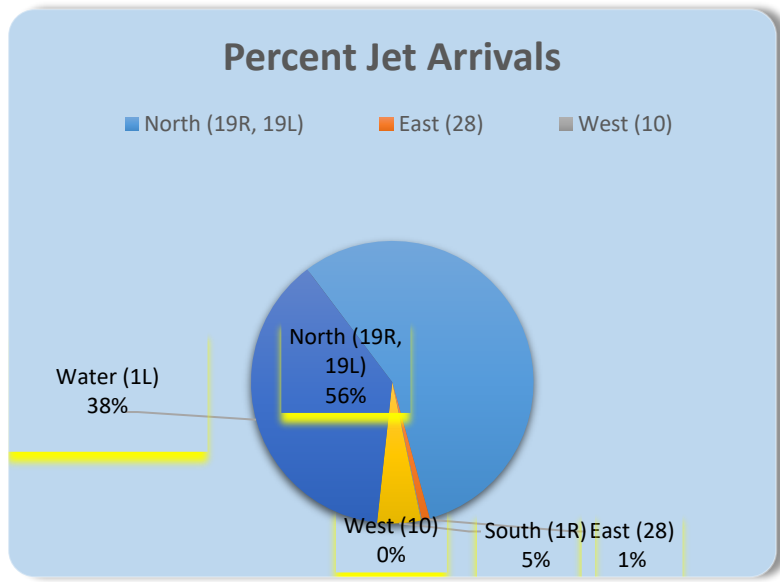
Operational Totals for March 2023	
Total Jet Operations (All Runways):	19,099
Total Prop/Turboprop Operations (All Runways):	1,621
Total North Flow Operations All Aircraft (Runway 1L & 1R):	8,855**
Total South Flow Operations All Aircraft (Runway 19R & 19L):	11,442**
All Aircraft Operations 7 a.m. -10 p.m.:	17,026***
All Aircraft Operations 10 p.m. – 7a.m.:	3,665***
Total Pilot Request Deviations (corporate & commercial jet combined):	362
Total Preferred Runway Unavailable Deviations (corporate & commercial jet combined):	154
Total FAA Assigned Deviations (corporate & commercial jet combined):	130
Total Noise Complaints (Month/Year):	315 / 862

Key
* Includes: Scheduled runway closures, unscheduled runway closures, aircraft emergencies and wildlife strike inspections
** Does not include Runway 10-28
*** Flights operating at exactly 7a.m. and 10p.m. are included in both figures
**** Combined deviation percentages for both runways

# Runway Map



## Percentage of Jet Arrivals by Runway End (March 2023)



- Runway Closures: **1R/19L**
- **West Runway** Unavailable includes closures for maintenances and emergencies, among other factors.
- Total complaints based on complaints logged as of [March 31<sup>st</sup>, 2023].
- Commercial Jet Aircrafts are: Boeing, Airbus, McDonald Douglas, Douglas Corporation, Bombardier and Embraer commercial aircraft.
- Pilot Request Deviations include commercial jet aircraft departures on Runway 19L and jet aircraft arrivals on Runway 1R.
- This data compiled from the noise office software provided by Casper Airport Solutions and may differ from official FAA monthly traffic counts.