

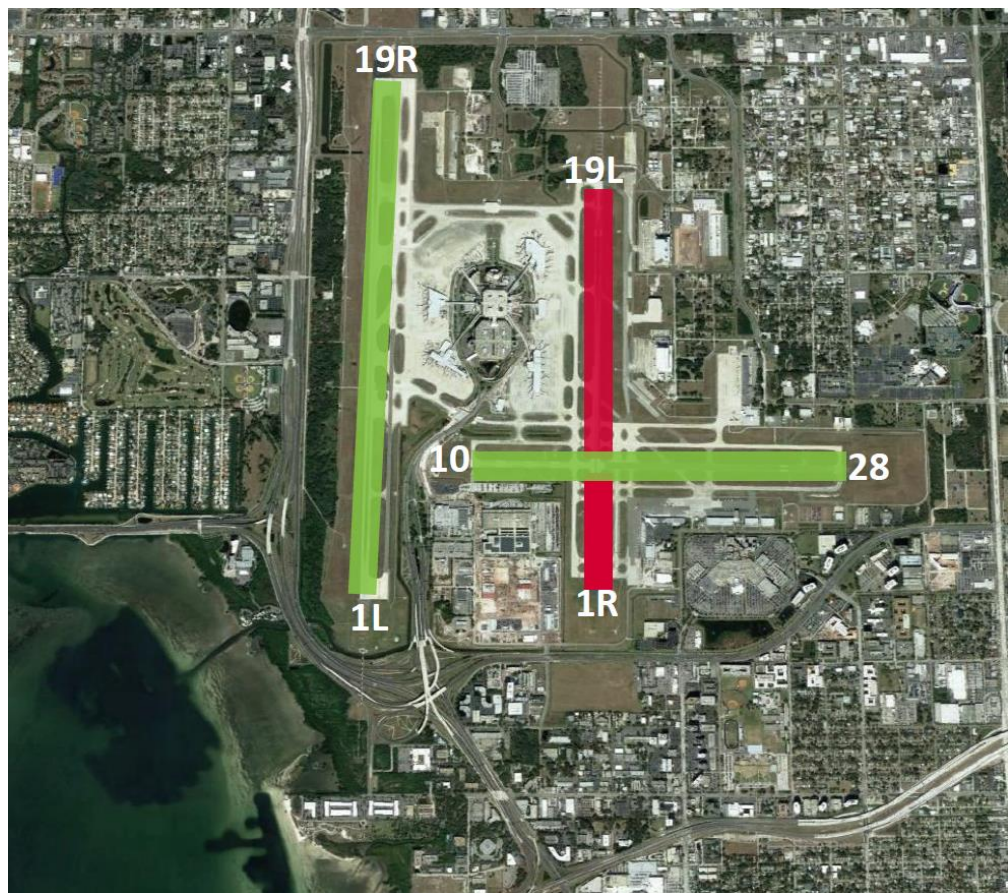
September 21, 2023

Hillsborough County
Aviation Authority
P.O. Box 22287
Tampa, Florida 33622
phone/ 813-870-8700
fax/ 813-875-6670
TampaAirport.com

Dear Community Noise Forum Participant,

As we shared during this week's bi-monthly Community Noise Forum meeting, beginning on Tuesday, September 26 through Saturday, October 14, the Airport's east runway, runway 1R/19L, will be closed for construction-related activity. This work was originally scheduled for after the holiday season but was able to be moved earlier to an even slower operational period.

For those less familiar with the Airport, the diagram below shows the closed runway in red:



During this runway closure, the majority of air traffic will utilize the Airport's west runway, Runway 1L/19R.

As always, runway closures are subject to change based on weather conditions and how quickly the required work can be accomplished.

Thank you.

Sincerely,



Adam Bouchard
Vice President of Operations