

Tampa International Airport

Monthly Noise Monitoring Office Report

April 2026



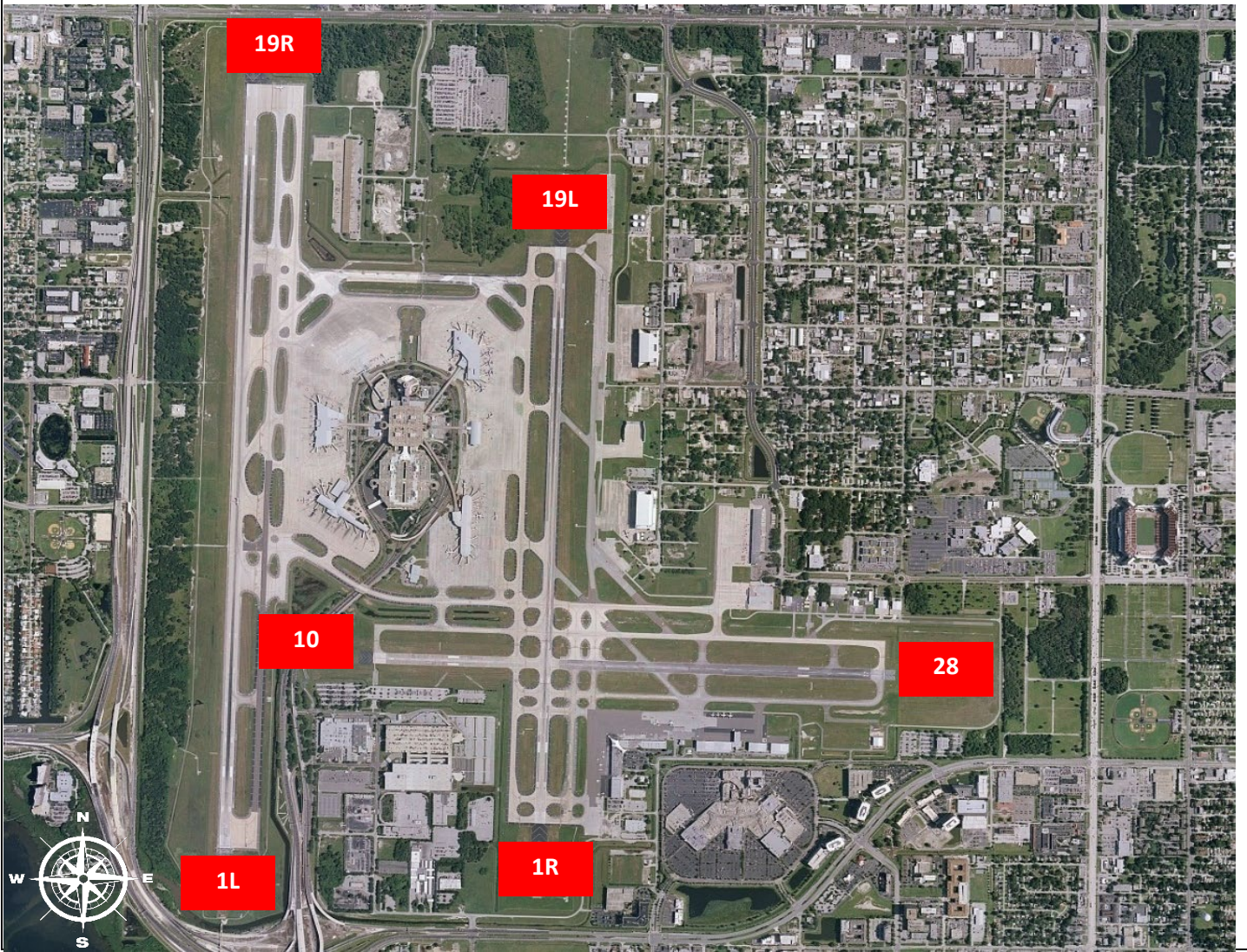
Monthly Noise Report		
Expected Operational Changes Upcoming Runway Closures:		Community Outreach
Runway 1L/19R (West) May 12 th 0800-1600	Runway 1R/19L (East) May 13 th 0800-1400	Runway 10/28 May 13 th 1000-1200
• A Community Noise Forum Meeting is scheduled for May 12 th , 2026, at 10:30 a.m.		
For more information, please visit: www.tampaairport.com/noise-abatement or call: (813) 870-7843		

Deviations		
North of Airport <i>1L / 1R Departures – Westbound Aircraft Turns Below 3,000 ft.</i>	South of Airport <i>Runway 1R Jet Arrivals & Runway 19L Commercial Jet Departures</i>	West of Airport <i>Runway 10-28 Arrivals / Departures</i>
Jet Turns Below 3,000 ft: 1428 Deviation Percentage of Total North Flow Departures: 7.4% Compliance: 92.6%	Total Rwy 1R Jet Landings: 914 Total Rwy 19L Commercial Jet Departures: 72 Combined Deviation Percentage of Total Jet Operations: 5.1% Combined Compliance: 94.9%	Total Rwy 10 Jet Arrivals: 10 Total Rwy 28 Jet Departures: 34 Deviation Percentage of Total Jet Operations: 0.2% Compliance: 99.8%

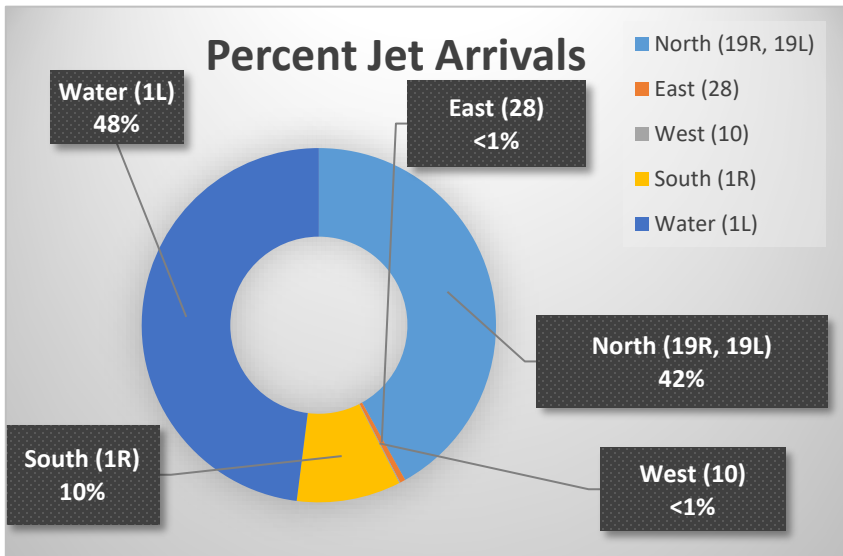
Operational Totals for April 2026	
Total Jet Operations (All Runways):	19,239
Total Prop/Turboprop Operations (All Runways):	1,023
Total North Flow Operations All Aircraft (Runway 1L & 1R):	11,419
Total South Flow Operations All Aircraft (Runway 19R & 19L):	8,546
All Aircraft Operations 7 a.m. – 10 p.m.³:	17,503
All Aircraft Operations 10 p.m. – 7 a.m.³:	3,019
Commercial Airline Deviations	46
Construction/Maintenance-Related Deviations¹:	111
FAA Assigned Deviations² (corporate & commercial jet combined):	86
General Aviation Deviations⁵:	787
Noise Complaints⁶ (Month/Year):	158/2,505

Key
¹ Includes: Scheduled and unscheduled runway closures
² Includes: Medivac flights, volume/wake separation, aircraft emergencies, and wildlife strike inspections
³ Flights operating at exactly 7 a.m. and 10 p.m. are included in both figures
⁴ Combined deviation percentages for both runways
⁵ "GA Jets" deviation code accounts for FAA-assigned or pilot-requested General Aviation aircraft
⁶ Duplicate complaints for the same flight from the same household are excluded from the totals

TPA Runway Map



Percentage of Jet Arrivals by Runway End (April 2026)



- **Total complaints** based on complaints logged as of the end of April 2026.
- **Commercial Jet Aircraft** are: Boeing, Airbus, McDonald Douglas, Douglas Aircraft, Bombardier, and Embraer commercial aircraft.
- **Pilot Request Deviations** include commercial jet aircraft departures on Runway 19L and jet aircraft arrivals on Runway 1R.
- This data was compiled from the noise office software provided by Casper Airport Solutions and may differ from official FAA monthly traffic counts.