

# Tampa International Airport

## Monthly Noise Monitoring Office Report

### March 2026



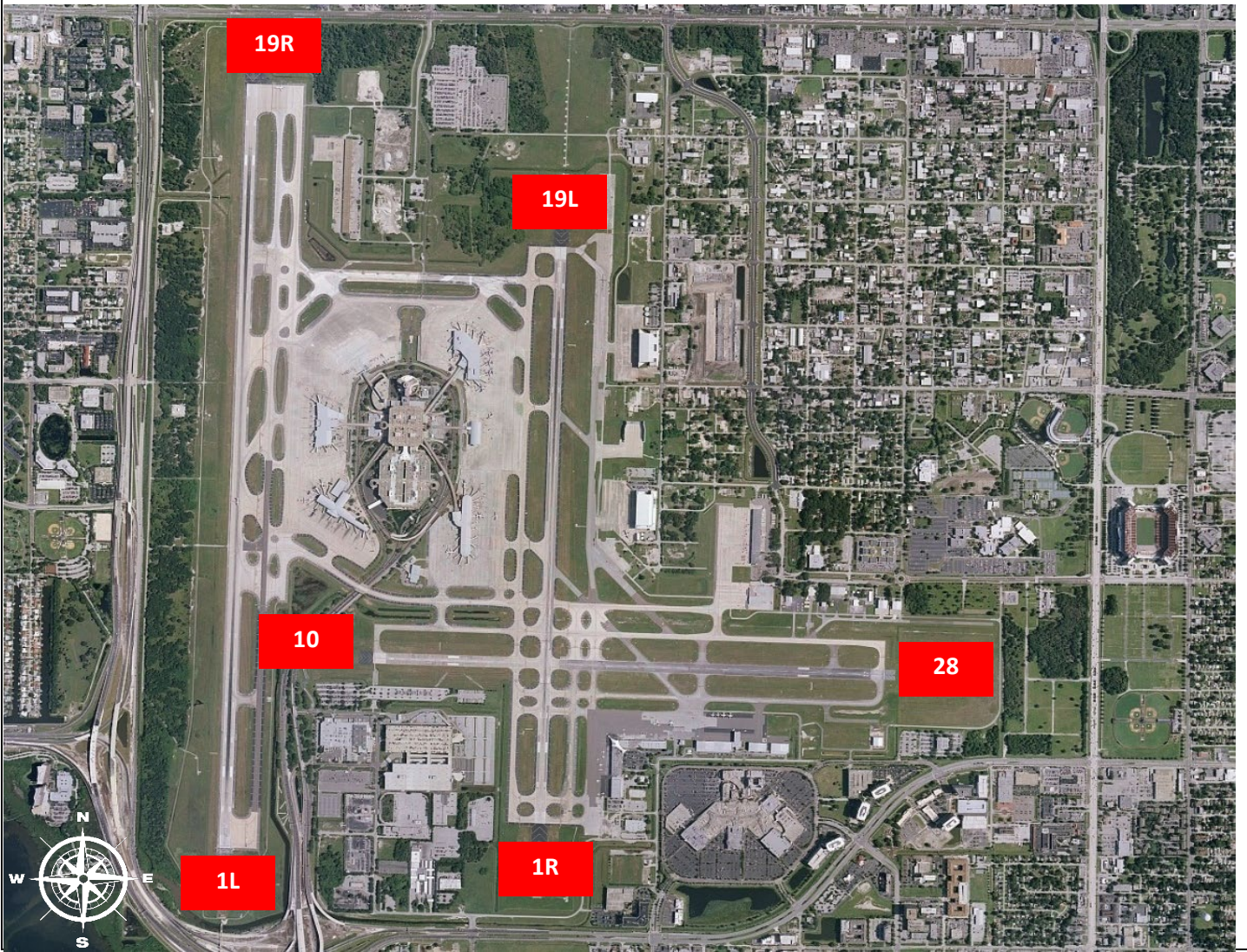
Monthly Noise Report		
<b>Expected Operational Changes</b> Scheduled Runway closures for March:		<b>Community Outreach</b>
<b>Runway 1L/19R (West)</b> April 21 <sup>st</sup> 0800-1600	<b>Runway 1R/19L (East)</b> April 22 <sup>nd</sup> 0800-1400	<b>Runway 10/28</b> April 23 <sup>rd</sup> 0700-1200
		<ul style="list-style-type: none"> <li>A Community Noise Forum Meeting is scheduled for May 12<sup>th</sup>, 2026 at 10:00 a.m.</li> </ul>
For more information, please visit: <a href="http://www.tampaairport.com/noise-abatement">www.tampaairport.com/noise-abatement</a> or call: (813) 870-7843		

Deviations		
<b>North of Airport</b> <i>1L / 1R Departures – Westbound Aircraft Turns Below 3,000 ft.</i>	<b>South of Airport</b> <i>Runway 1R Jet Arrivals &amp; Runway 19L Commercial Jet Departures</i>	<b>West of Airport</b> <i>Runway 10-28 Arrivals / Departures</i>
<b>Jet Turns Below 3,000 ft:</b> 1778 <b>Deviation Percentage of Total North Flow Departures:</b> 8.6% <b>Compliance:</b> 91.4%	<b>Total Rwy 1R Jet Landings:</b> 881 <b>Total Rwy 19L Commercial Jet Departures:</b> 95 <b>Combined Deviation Percentage of Total Jet Operations:</b> 4.7% <b>Combined Compliance:</b> 95.3%	<b>Total Rwy 10 Jet Arrivals:</b> 16 <b>Total Rwy 28 Jet Departures:</b> 59 <b>Deviation Percentage of Total Jet Operations:</b> 0.4% <b>Compliance:</b> 99.6%

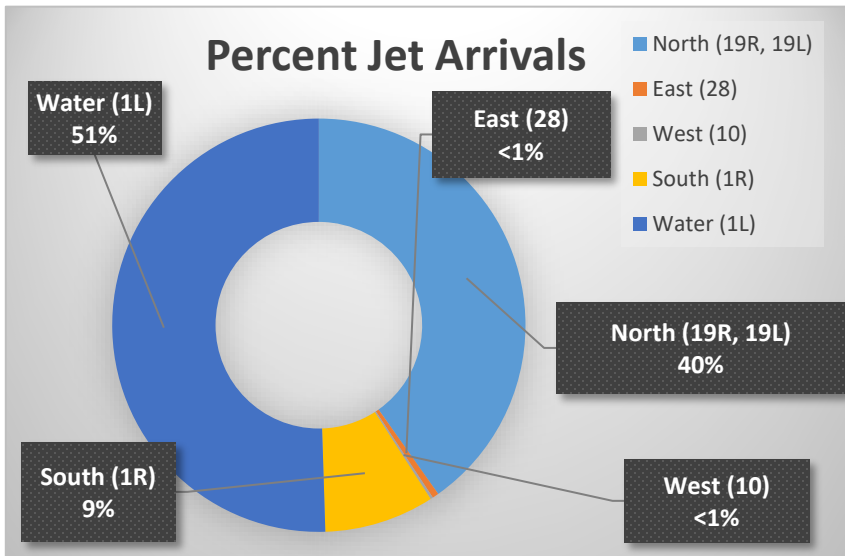
Operational Totals for March 2026	
<b>Total Jet Operations (All Runways):</b>	<b>20,596</b>
<b>Total Prop/Turboprop Operations (All Runways):</b>	<b>1,050</b>
<b>Total North Flow Operations All Aircraft (Runway 1L &amp; 1R):</b>	<b>12,686</b>
<b>Total South Flow Operations All Aircraft (Runway 19R &amp; 19L):</b>	<b>8,557</b>
<b>All Aircraft Operations 7 a.m. – 10 p.m.<sup>3</sup>:</b>	<b>18423</b>
<b>All Aircraft Operations 10 p.m. – 7 a.m.<sup>3</sup>:</b>	<b>3,482</b>
<b>Commercial Airline Deviations</b>	<b>34</b>
<b>Construction/Maintenance-Related Deviations<sup>1</sup>:</b>	<b>143</b>
<b>FAA Assigned Deviations<sup>2</sup> (corporate &amp; commercial jet combined):</b>	<b>95</b>
<b>General Aviation Deviations<sup>5</sup>:</b>	<b>778</b>
<b>Noise Complaints<sup>6</sup> (Month/Year):</b>	<b>268/2,347</b>

Key
<sup>1</sup> Includes: Scheduled and unscheduled runway closures
<sup>2</sup> Includes: Medivac flights, volume/wake separation, aircraft emergencies, and wildlife strike inspections
<sup>3</sup> Flights operating at exactly 7 a.m. and 10 p.m. are included in both figures
<sup>4</sup> Combined deviation percentages for both runways
<sup>5</sup> "GA Jets" deviation code accounts for FAA-assigned or pilot-requested General Aviation aircraft
<sup>6</sup> Duplicate complaints for the same flight from the same household are excluded from the totals

# TPA Runway Map



## Percentage of Jet Arrivals by Runway End (March 2026)



- **Total complaints** based on complaints logged as of the end of March 2026.
- **Commercial Jet Aircraft** are: Boeing, Airbus, McDonald Douglas, Douglas Aircraft, Bombardier, and Embraer commercial aircraft.
- **Pilot Request Deviations** include commercial jet aircraft departures on Runway 19L and jet aircraft arrivals on Runway 1R.
- This data was compiled from the noise office software provided by Casper Airport Solutions and may differ from official FAA monthly traffic counts.