

Tampa International Airport

Monthly Noise Monitoring Office Report

February 2026



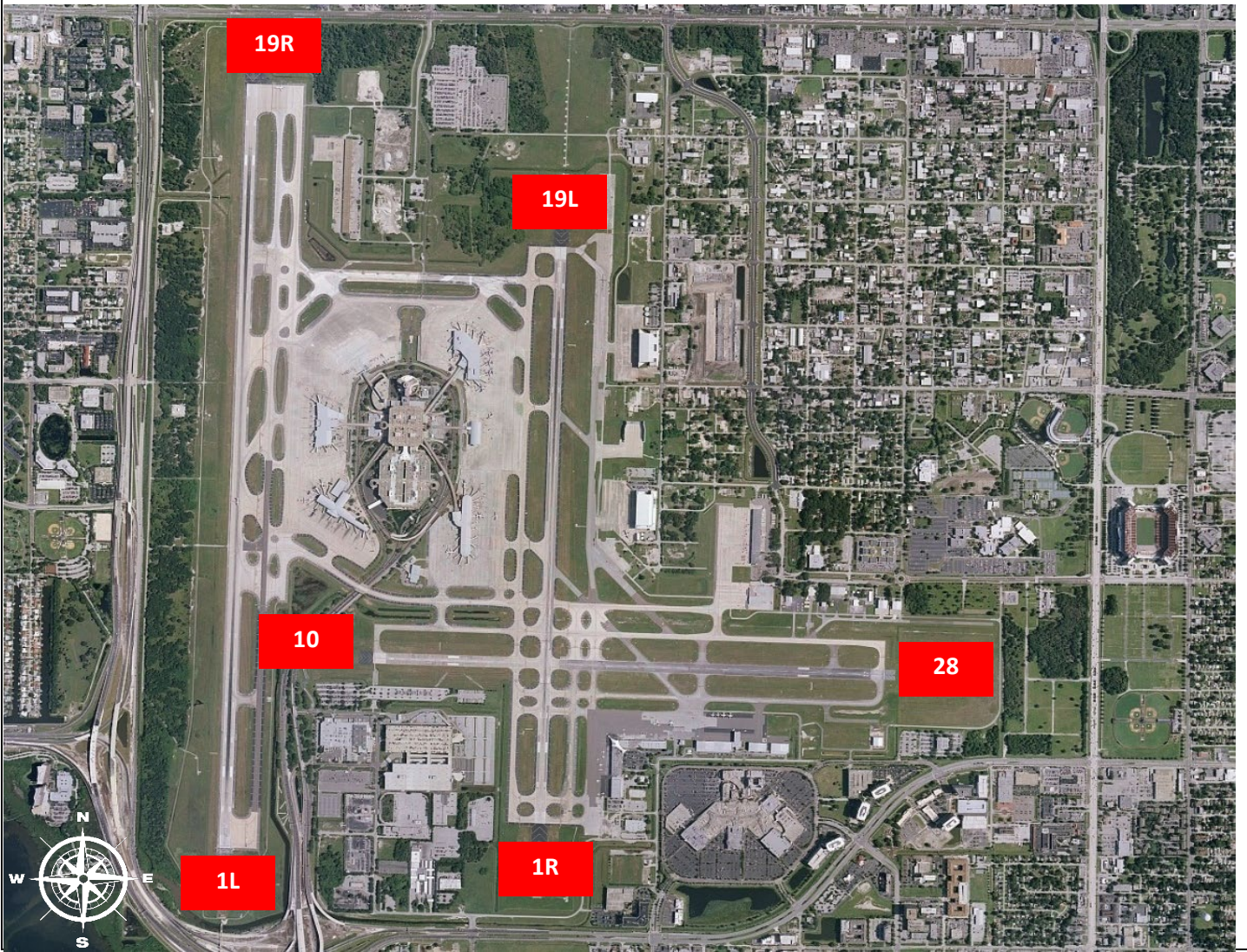
Monthly Noise Report		
Expected Operational Changes Scheduled Runway closures for February: Rwy 1L/19R (West) Rwy 1R/19L (East) Rwy 10/28 March 10 th March 4 th – March 9 th 0800-1600 Continuous		Community Outreach <ul style="list-style-type: none"> A Community Noise Forum Meeting is scheduled for May 12th, 2026 at 10:00 a.m.
For more information, please visit: www.tampaairport.com/noise-abatement or call: (813) 870-7843		

Deviations		
North of Airport <i>1L / 1R Departures – Westbound Aircraft Turns Below 3,000 ft.</i> Jet Turns Below 3,000 ft: 888 Deviation Percentage of Total North Flow Departures: 5.2% Compliance: 94.8%	South of Airport <i>Runway 1R Jet Arrivals & Runway 19L Commercial Jet Departures</i> Total Rwy 1R Jet Landings: 0 Total Rwy 19L Commercial Jet Departures: 0 Combined Deviation Percentage of Total Jet Operations: 0% Combined Compliance: 100%	West of Airport <i>Runway 10-28 Arrivals / Departures</i> Total Rwy 10 Jet Arrivals: 16 Total Rwy 28 Jet Departures: 841 Deviation Percentage of Total Jet Operations: 5.0% Compliance: 95.0%

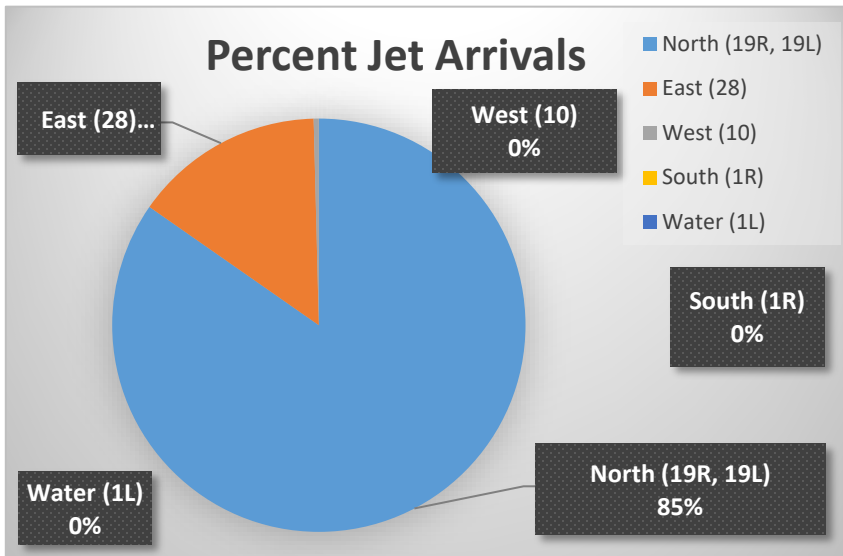
Operational Totals for February 2026	
Total Jet Operations (All Runways):	17,032
Total Prop/Turboprop Operations (All Runways):	1,001
Total North Flow Operations All Aircraft (Runway 1L & 1R):	8,349
Total South Flow Operations All Aircraft (Runway 19R & 19L):	7,460
All Aircraft Operations 7 a.m. – 10 p.m.³:	15,913
All Aircraft Operations 10 p.m. – 7 a.m.³:	2,356
Commercial Airline Deviations	8
Construction/Maintenance-Related Deviations¹:	0
FAA Assigned Deviations² (corporate & commercial jet combined):	4
General Aviation Deviations⁵:	846
Noise Complaints⁶ (Month/Year):	129 / 2,079

Key
¹ Includes: Scheduled and unscheduled runway closures
² Includes: Medivac flights, volume/wake separation, aircraft emergencies, and wildlife strike inspections
³ Flights operating at exactly 7 a.m. and 10 p.m. are included in both figures
⁴ Combined deviation percentages for both runways
⁵ "GA Jets" deviation code accounts for FAA-assigned or pilot-requested General Aviation aircraft
⁶ Duplicate complaints for the same flight from the same household are excluded from the totals

TPA Runway Map



Percentage of Jet Arrivals by Runway End (February 2026)



- **Total complaints** based on complaints logged as of the end of February 2026.
- **Commercial Jet Aircraft** are: Boeing, Airbus, McDonald Douglas, Douglas Aircraft, Bombardier, and Embraer commercial aircraft.
- **Pilot Request Deviations** include commercial jet aircraft departures on Runway 19L and jet aircraft arrivals on Runway 1R.
- This data was compiled from the noise office software provided by Casper Airport Solutions and may differ from official FAA monthly traffic counts.