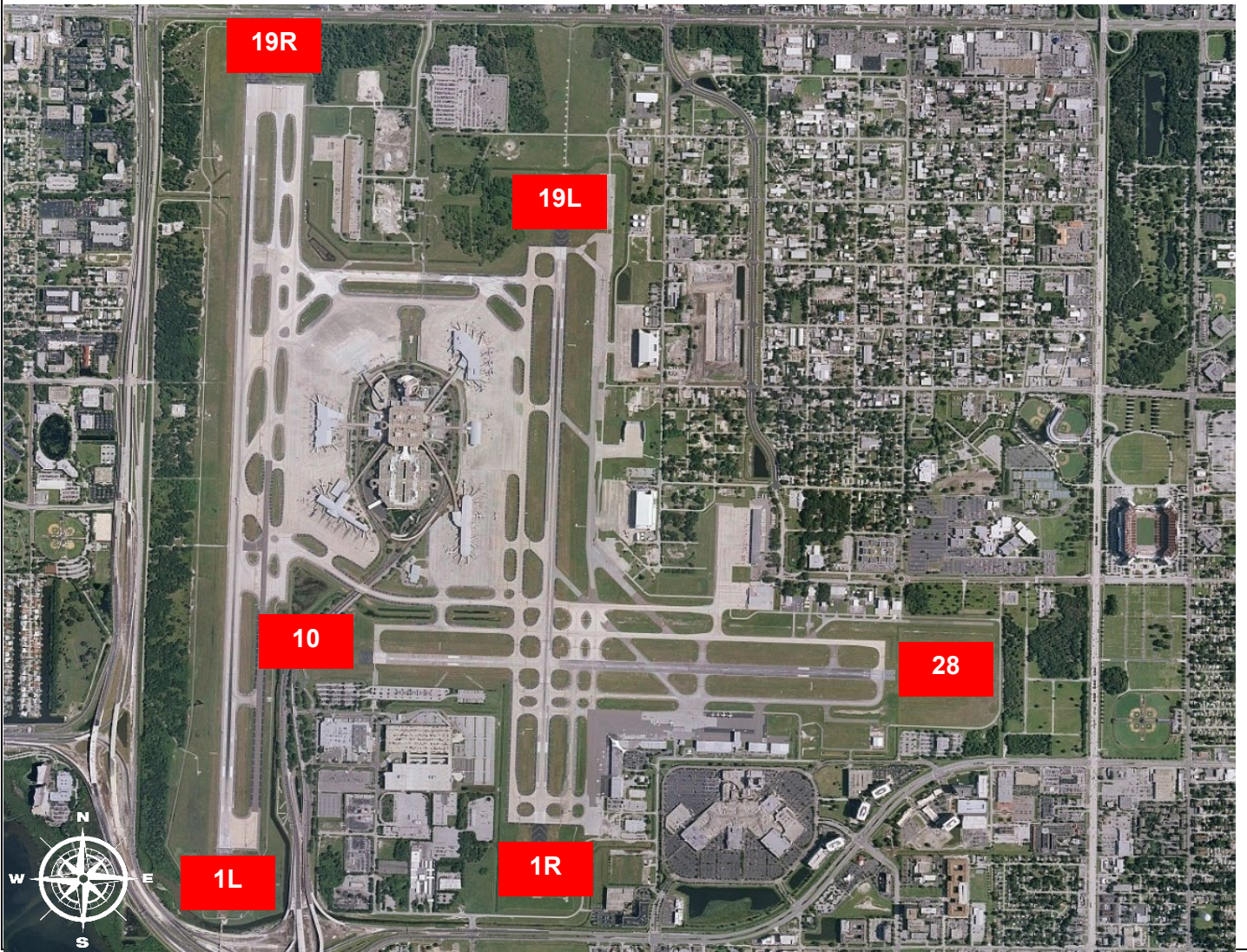
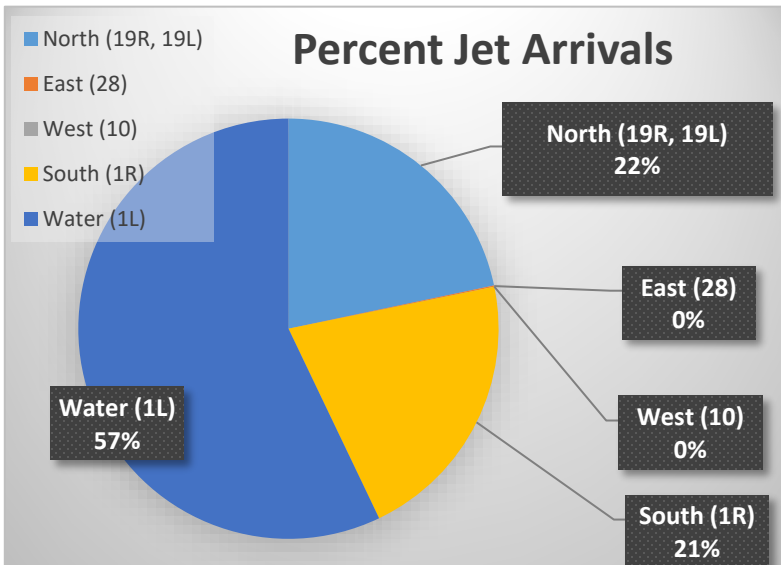


TPA Runway Map



Percentage of Jet Arrivals by Runway End (December 2025)



- **Total complaints** based on complaints logged as of December 31, 2025.
- **Commercial Jet Aircraft** are: Boeing, Airbus, McDonald Douglas, Douglas Aircraft, Bombardier, and Embraer commercial aircraft.
- **Pilot Request Deviations** include commercial jet aircraft departures on Runway 19L and jet aircraft arrivals on Runway 1R.
- This data was compiled from the noise office software provided by Casper Airport Solutions and may differ from official FAA monthly traffic counts.