

Tampa International Airport

Monthly Noise Monitoring Office Report

November 2025



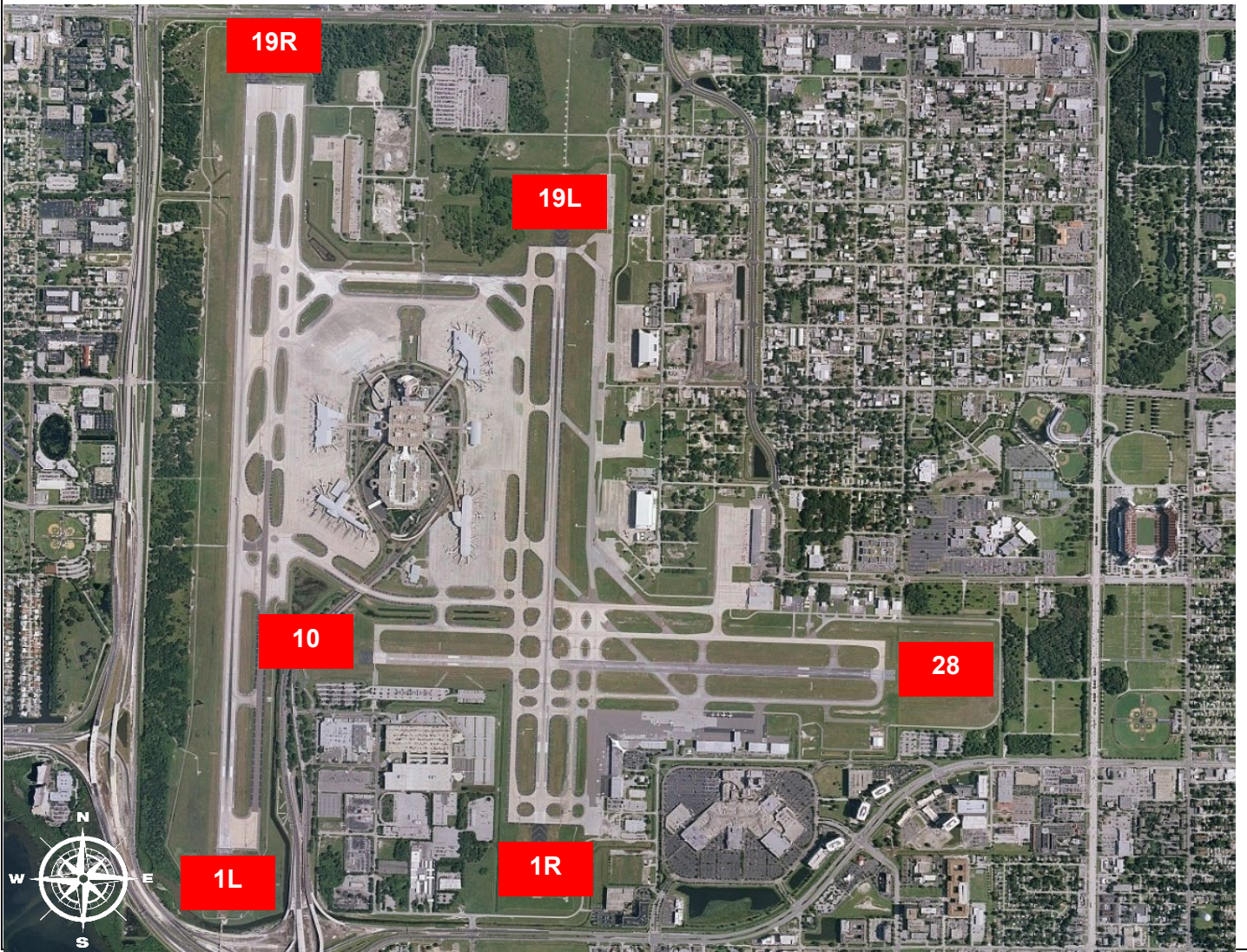
Monthly Noise Report		
Expected Operational Changes Scheduled Runway closures for November: Rwy 1L/19R (West) Rwy 1R/19L (East) Rwy 10/28 Dec 8 th – Dec 14 th Jan 6 th – Jan 31st Closed nightly		Community Outreach <ul style="list-style-type: none"> A Community Noise Forum Meeting is scheduled for February 17th, 2026.
For more information, please visit: www.tampaairport.com/noise-abatement or call: (813) 870-7843		

Deviations		
North of Airport <i>1L / 1R Departures – Westbound Aircraft Turns Below 3,000 ft.</i> Jet Turns Below 3,000 ft: 2057 Deviation Percentage of Total North Flow Departures: 11.9% Compliance: 88.1%	South of Airport <i>Runway 1R Jet Arrivals & Runway 19L Commercial Jet Departures</i> Total Rwy 1R Jet Landings: 387 Total Rwy 19L Commercial Jet Departures: 27 Combined Deviation Percentage of Total Jet Operations: 2.4% Combined Compliance: 97.6%	West of Airport <i>Runway 10-28 Arrivals / Departures</i> Total Rwy 10 Jet Arrivals: 3 Total Rwy 28 Jet Departures: 3 Deviation Percentage of Total Jet Operations: 0.0% Compliance: 100.0%

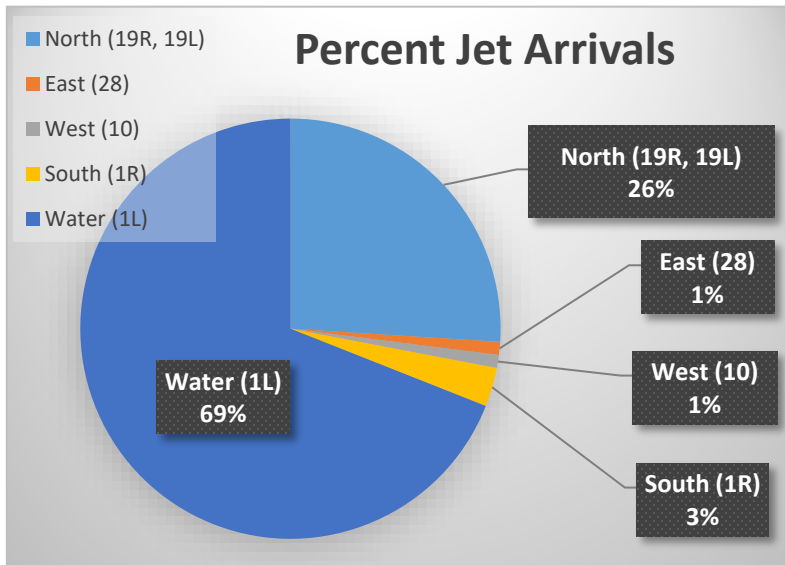
Operational Totals for November 2025	
Total Jet Operations (All Runways):	17,256
Total Prop/Turboprop Operations (All Runways):	946
Total North Flow Operations All Aircraft (Runway 1L & 1R):	13,553
Total South Flow Operations All Aircraft (Runway 19R & 19L):	4,584
All Aircraft Operations 7 a.m. – 10 p.m.³:	15,788
All Aircraft Operations 10 p.m. – 7 a.m.³:	2,668
Commercial Airline Deviations	11
Construction/Maintenance-Related Deviations¹:	1
FAA Assigned Deviations² (corporate & commercial jet combined):	43
General Aviation Deviations⁵:	365
Noise Complaints⁶ (Month/Year):	42 / 1,698

Key
¹ Includes: Scheduled and unscheduled runway closures
² Includes: Medivac flights, volume/wake separation, aircraft emergencies, and wildlife strike inspections
³ Flights operating at exactly 7 a.m. and 10 p.m. are included in both figures
⁴ Combined deviation percentages for both runways
⁵ "GA Jets" deviation code accounts for FAA-assigned or pilot-requested General Aviation aircraft
⁶ Duplicate complaints for the same flight from the same household are excluded from the totals

TPA Runway Map



Percentage of Jet Arrivals by Runway End (November 2025)



- **Total complaints** based on complaints logged as of November 30, 2025.
- **Commercial Jet Aircraft** are: Boeing, Airbus, McDonald Douglas, Douglas Aircraft, Bombardier, and Embraer commercial aircraft.
- **Pilot Request Deviations** include commercial jet aircraft departures on Runway 19L and jet aircraft arrivals on Runway 1R.
- This data was compiled from the noise office software provided by Casper Airport Solutions and may differ from official FAA monthly traffic counts.