

# Tampa International Airport

## Monthly Noise Monitoring Office Report

### October 2025



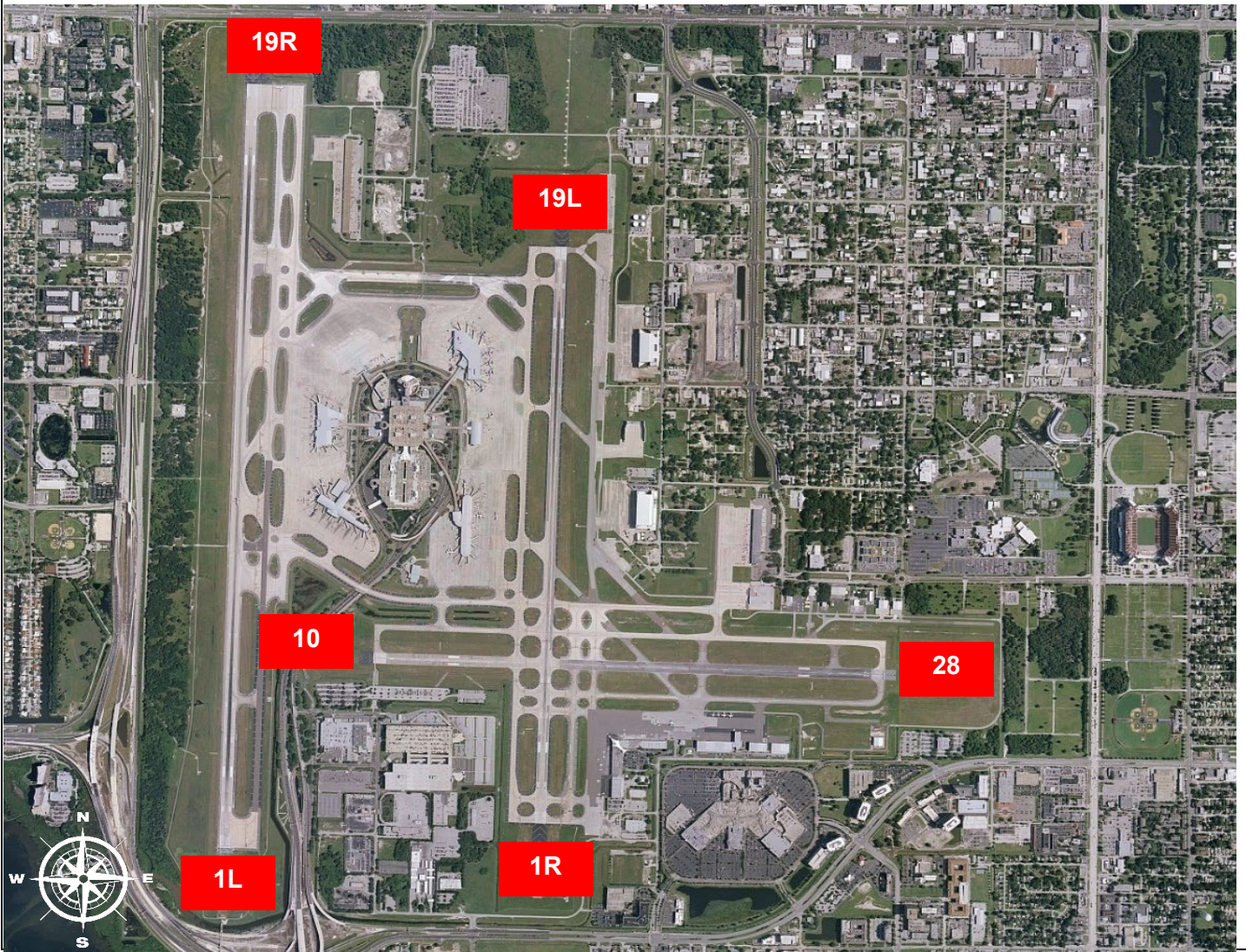
Monthly Noise Report					
Expected Operational Changes		Community Outreach			
<p>Scheduled Runway closures for October:</p> <table border="0"> <tr> <td><b>Rwy 1L/19R (West)</b> No Planned Closures</td> <td><b>Rwy 1R/19L (East)</b> Continuous Closure 9/22 - December</td> <td><b>Rwy 10/28</b> Continuous Closure 7/14 - November</td> </tr> </table>		<b>Rwy 1L/19R (West)</b> No Planned Closures	<b>Rwy 1R/19L (East)</b> Continuous Closure 9/22 - December	<b>Rwy 10/28</b> Continuous Closure 7/14 - November	<ul style="list-style-type: none"> <li>A Community Noise Forum Meeting is scheduled for November 18<sup>th</sup>, 2025.</li> </ul>
<b>Rwy 1L/19R (West)</b> No Planned Closures	<b>Rwy 1R/19L (East)</b> Continuous Closure 9/22 - December	<b>Rwy 10/28</b> Continuous Closure 7/14 - November			
<p>For more information, please visit: <a href="http://www.tampaairport.com/noise-abatement">www.tampaairport.com/noise-abatement</a> or call: (813) 870-7843</p>					

Deviations		
North of Airport	South of Airport	West of Airport
<p>1L / 1R Departures – Westbound Aircraft Turns Below 3,000 ft.</p> <p>Jet Turns Below 3,000 ft: 4380 Deviation Percentage of Total North Flow Departures: 26.6% Compliance: 73.4%</p>	<p>Runway 1R Jet Arrivals &amp; Runway 19L Commercial Jet Departures</p> <p>Total Rwy 1R Jet Landings: 0 Total Rwy 19L Commercial Jet Departures: 0 Combined Deviation Percentage of Total Jet Operations: 0.0% Combined Compliance: 100.0%</p>	<p>Runway 10-28 Arrivals / Departures</p> <p>Total Rwy 10 Jet Arrivals: 0 Total Rwy 28 Jet Departures: 0 Deviation Percentage of Total Jet Operations: 0.0% Compliance: 100.0%</p>

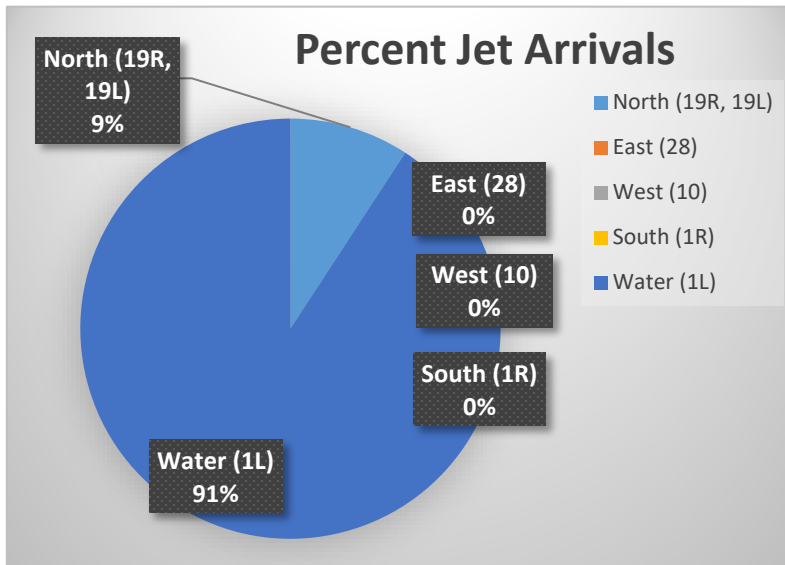
Operational Totals for October 2025	
Total Jet Operations (All Runways):	16,441
Total Prop/Turboprop Operations (All Runways):	996
Total North Flow Operations All Aircraft (Runway 1L & 1R):	15,905
Total South Flow Operations All Aircraft (Runway 19R & 19L):	1,517
All Aircraft Operations 7 a.m. – 10 p.m. <sup>3</sup> :	15,042
All Aircraft Operations 10 p.m. – 7 a.m. <sup>3</sup> :	2,614
Commercial Airline Deviations	0
Construction/Maintenance-Related Deviations <sup>1</sup> :	0
FAA Assigned Deviations <sup>2</sup> (corporate & commercial jet combined):	0
General Aviation Deviations <sup>5</sup> :	0
Noise Complaints <sup>6</sup> (Month/Year):	46 / 1,656

Key
1 Includes: Scheduled and unscheduled runway closures
2 Includes: Medivac flights, volume/wake separation, aircraft emergencies, and wildlife strike inspections
3 Flights operating at exactly 7 a.m. and 10 p.m. are included in both figures
4 Combined deviation percentages for both runways
5 "GA Jets" deviation code accounts for FAA-assigned or pilot-requested General Aviation aircraft
6 Duplicate complaints for the same flight from the same household are excluded from the totals

## Runway Map



## Percentage of Jet Arrivals by Runway End (October 2025)



- **Total complaints** based on complaints logged as of October 31, 2025.
- **Commercial Jet Aircraft** are: Boeing, Airbus, McDonald Douglas, Douglas Aircraft, Bombardier, and Embraer commercial aircraft.
- **Pilot Request Deviations** include commercial jet aircraft departures on Runway 19L and jet aircraft arrivals on Runway 1R.
- This data was compiled from the noise office software provided by Casper Airport Solutions and may differ from official FAA monthly traffic counts.