

# Tampa International Airport

## Monthly Noise Monitoring Office Report

### August 2025



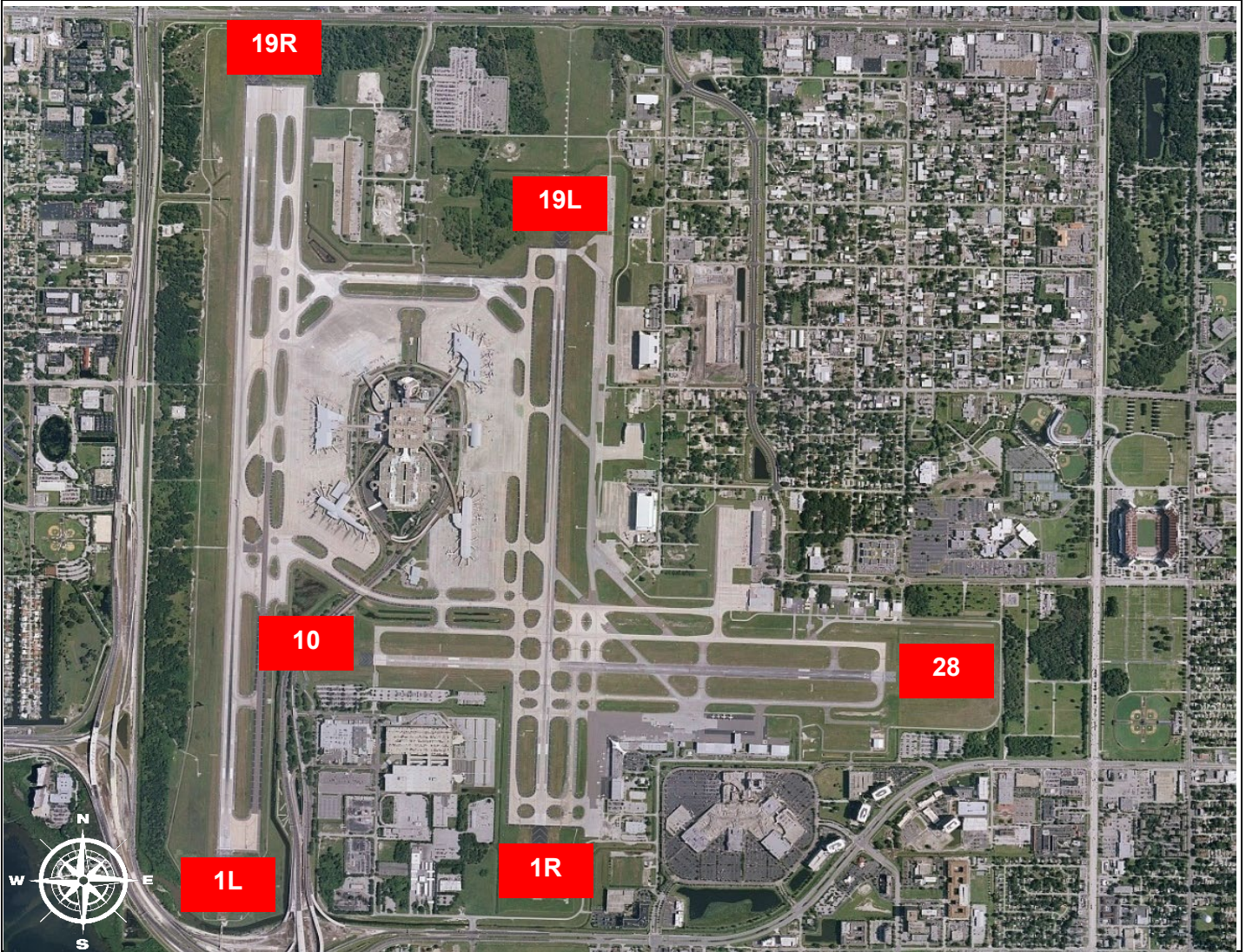
Monthly Noise Report		
Expected Operational Changes		Community Outreach
Scheduled Runway closures for August: <b>Rwy 10/28</b> <b>Rwy 1L/19R (West)</b> <b>Rwy 1R/19L (East)</b> Continuous Closure      8/12 0800-1400      8/13 0800-1400 7/14/25 - October      8/26 0800-1400      8/27 0800-1400		<ul style="list-style-type: none"> <li>A Community Noise Forum Meeting is scheduled for November 18<sup>th</sup>, 2025.</li> </ul>
For more information, please visit: <a href="http://www.tampaairport.com/noise-abatement">www.tampaairport.com/noise-abatement</a> or call: (813) 870-7843		

Deviations		
North of Airport	West of Airport	South of Airport
<i>1L / 1R Departures – Westbound Aircraft Turns Below 3,000 ft.</i>  <b>Jet Turns Below 3,000 ft: 405</b> <b>Deviation Percentage of Total North Flow Departures: 2.6%</b> <b>Compliance: 97.4%</b>	<i>Runway 10-28 Arrivals / Departures</i>  <b>Total Rwy 10 Jet Arrivals: 0</b> <b>Total Rwy 28 Jet Departures: 0</b> <b>Deviation Percentage of Total Jet Operations: 0.0%</b> <b>Compliance: 100.0%</b>	<i>Runway 1R Jet Arrivals and Runway 19L Commercial Jet Departures</i>  <b>Total Rwy 1R Jet Landings: 359</b> <b>Total Rwy 19L Commercial Jet Departures: 177</b> <b>Combined Deviation Percentage of Total Jet Operations: 3.4%</b> <b>Combined Compliance: 96.6%</b>

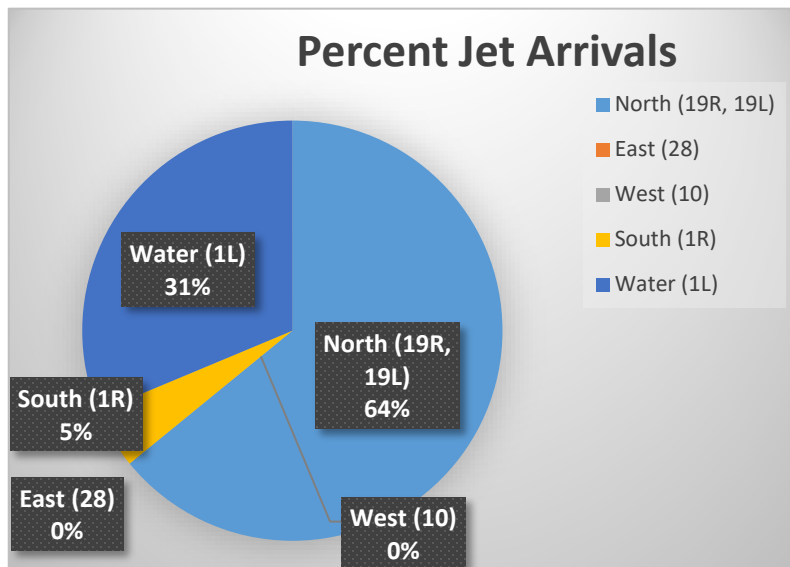
Operational Totals for August 2025	
<b>Total Jet Operations (All Runways):</b>	<b>15,604</b>
<b>Total Prop/Turboprop Operations (All Runways):</b>	<b>839</b>
<b>Total North Flow Operations All Aircraft (Runway 1L &amp; 1R):</b>	<b>5,858</b>
<b>Total South Flow Operations All Aircraft (Runway 19R &amp; 19L):</b>	<b>10,572</b>
<b>All Aircraft Operations 7 a.m. -10 p.m.<sup>3</sup>:</b>	<b>13,840</b>
<b>All Aircraft Operations 10 p.m. – 7a.m.<sup>3</sup>:</b>	<b>2,770</b>
<b>Commercial Airline Deviations</b>	<b>22</b>
<b>Construction/Maintenance-Related Deviations<sup>1</sup>:</b>	<b>56</b>
<b>FAA Assigned Deviations<sup>2</sup></b> (corporate & commercial jet combined):	<b>159</b>
<b>General Aviation Deviations<sup>5</sup>:</b>	<b>299</b>
<b>Noise Complaints<sup>6</sup> (Month/Year):</b>	<b>108 / 1,560</b>

Key
<sup>1</sup> Includes: Scheduled and unscheduled runway closures
<sup>2</sup> Includes: Medivac flights, volume/wake separation, aircraft emergencies, and wildlife strike inspections
<sup>3</sup> Flights operating at exactly 7 a.m. and 10 p.m. are included in both figures
<sup>4</sup> Combined deviation percentages for both runways
<sup>5</sup> "GA Jets" deviation code accounts for FAA-assigned or pilot-requested General Aviation aircraft
<sup>6</sup> Duplicate complaints for the same flight from the same household are excluded from the totals

## Runway Map



## Percentage of Jet Arrivals by Runway End (August 2025)



- Total complaints based on complaints logged as of August 31, 2025.
- Commercial Jet Aircraft are: Boeing, Airbus, McDonald Douglas, Douglas Aircraft, Bombardier, and Embraer commercial aircraft.
- Pilot Request Deviations include commercial jet aircraft departures on Runway 19L and jet aircraft arrivals on Runway 1R.
- This data was compiled from the noise office software provided by Casper Airport Solutions and August differs from official FAA monthly traffic counts.