

# Tampa International Airport

## Monthly Noise Monitoring Office Report

### June 2025



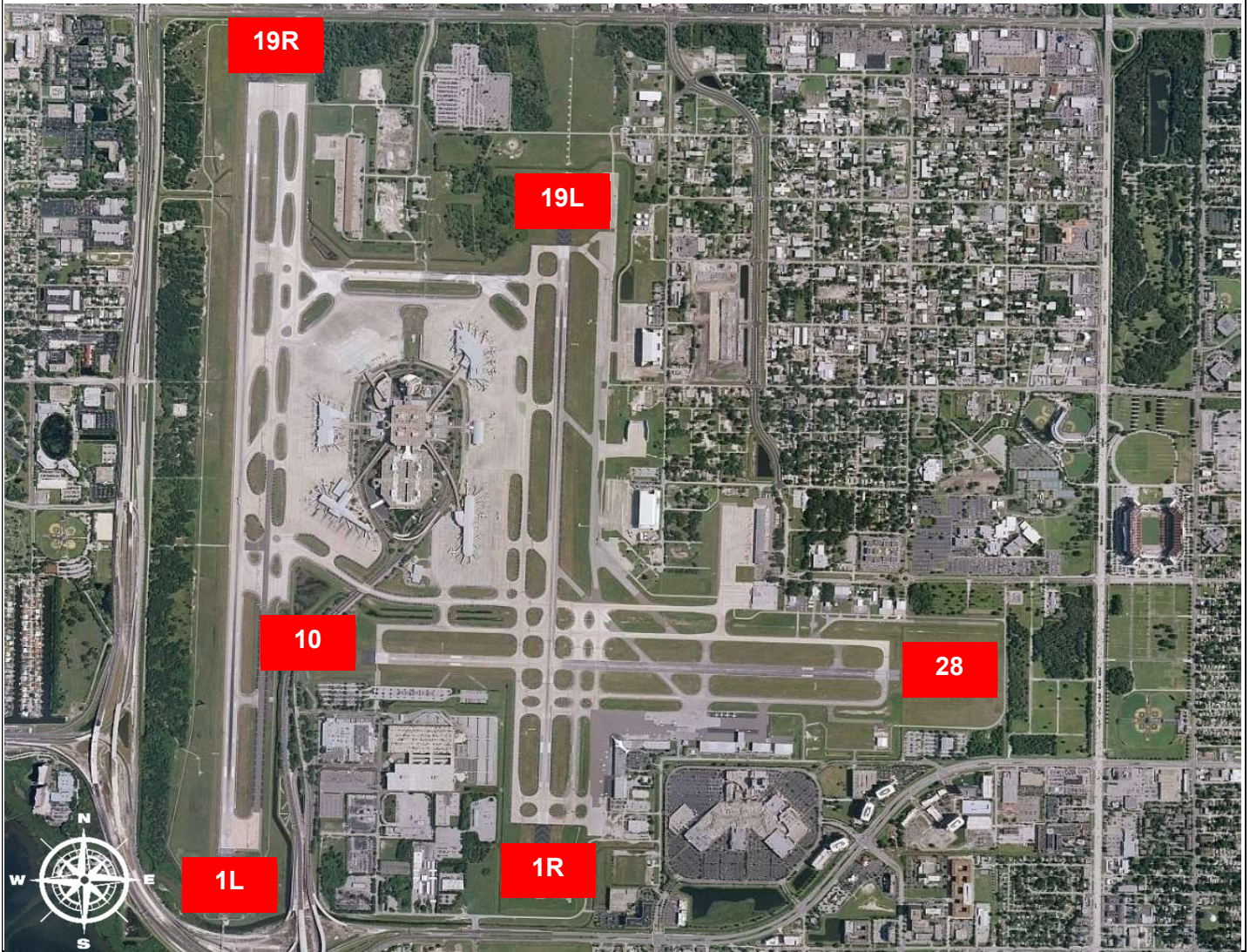
Monthly Noise Report												
Expected Operational Changes			Community Outreach									
Scheduled Runway closures for June: <table border="0"> <tr> <td><b>Rwy 10/28</b></td> <td><b>Rwy 1L/19R (West)</b></td> <td><b>Rwy 1R/19L (East)</b></td> </tr> <tr> <td>5/5 0700-1200</td> <td>5/6 0800-1200</td> <td>5/7 0800-1200</td> </tr> <tr> <td>5/7 1000-1200</td> <td>5/20 0800-1200</td> <td>5/21 0800-1200</td> </tr> </table>			<b>Rwy 10/28</b>	<b>Rwy 1L/19R (West)</b>	<b>Rwy 1R/19L (East)</b>	5/5 0700-1200	5/6 0800-1200	5/7 0800-1200	5/7 1000-1200	5/20 0800-1200	5/21 0800-1200	<ul style="list-style-type: none"> <li>A Community Noise Forum Meeting was held virtually on Thursday, June 19<sup>th</sup>, 2025 at 3:00 PM.</li> </ul>
<b>Rwy 10/28</b>	<b>Rwy 1L/19R (West)</b>	<b>Rwy 1R/19L (East)</b>										
5/5 0700-1200	5/6 0800-1200	5/7 0800-1200										
5/7 1000-1200	5/20 0800-1200	5/21 0800-1200										
For more information please visit: <a href="http://www.tampaairport.com/noise-abatement">www.tampaairport.com/noise-abatement</a> or call: (813) 870-7843												

Deviations		
North of Airport	West of Airport	South of Airport
1L / 1R Departures – Westbound Aircraft Turns Below 3,000 ft.  <b>Jet Turns Below 3,000 ft: 397</b> <b>Deviation Percentage of Total North Flow Departures: 2.4%</b> <b>Compliance: 97.6%</b>	Runway 10-28 Arrivals / Departures  <b>Total Rwy 10 Jet Arrivals: 1</b> <b>Total Rwy 28 Jet Departures: 27</b> <b>Deviation Percentage of Total Jet Operations: 0.2%</b> <b>Compliance: 99.8%</b>	Runway 1R Jet Arrivals and Runway 19L Commercial Jet Departures  <b>Total Rwy 1R Jet Landings: 220</b> <b>Total Rwy 19L Commercial Jet Departures: 156</b> <b>Combined Deviation Percentage of Total Jet Operations<sup>4</sup>: 2.3%</b> <b>Combined Compliance<sup>4</sup>: 97.7%</b>

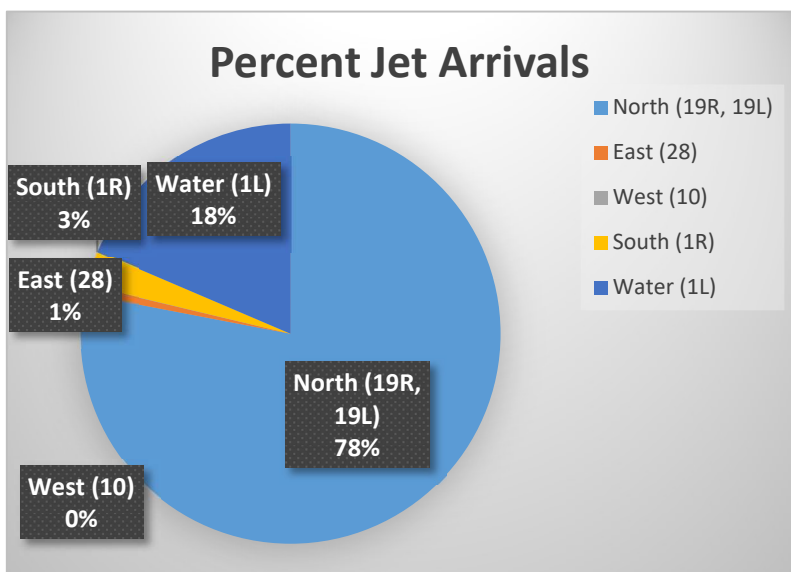
Operational Totals for June 2025	
<b>Total Jet Operations (All Runways):</b>	<b>16,627</b>
<b>Total Prop/Turboprop Operations (All Runways):</b>	<b>976</b>
<b>Total North Flow Operations All Aircraft (Runway 1L &amp; 1R):</b>	<b>3,573</b>
<b>Total South Flow Operations All Aircraft (Runway 19R &amp; 19L):</b>	<b>13,659</b>
<b>All Aircraft Operations 7 a.m. -10 p.m.<sup>3</sup>:</b>	<b>14,591</b>
<b>All Aircraft Operations 10 p.m. – 7a.m.<sup>3</sup>:</b>	<b>3,200</b>
<b>Commercial Airline Deviations</b>	<b>52</b>
<b>Construction/Maintenance-Related Deviations<sup>1</sup>:</b>	<b>30</b>
<b>FAA Assigned Deviations<sup>2</sup> (corporate &amp; commercial jet combined):</b>	<b>146</b>
<b>General Aviation Deviations<sup>5</sup>:</b>	<b>176</b>
<b>Noise Complaints<sup>6</sup> (Month/Year):</b>	<b>108 / 1,341</b>

Key
<sup>1</sup> Includes: Scheduled and unscheduled runway closures
<sup>2</sup> Includes: Medivac flights, volume/wake separation, aircraft emergencies, and wildlife strike inspections
<sup>3</sup> Flights operating at exactly 7a.m. and 10p.m. are included in both figures
<sup>4</sup> Combined deviation percentages for both runways
<sup>5</sup> "GA Jets" deviation code accounts for FAA Assigned or Pilot Request for General Aviation
<sup>6</sup> Duplicate complaints for the same flight from the same household are excluded from totals

## Runway Map



## Percentage of Jet Arrivals by Runway End (June 2025)



- Total complaints based on complaints logged as of [June 30, 2025].
- Commercial Jet Aircrafts are: Boeing, Airbus, McDonald Douglas, Douglas Corporation, Bombardier and Embraer commercial aircraft.
- Pilot Request Deviations include commercial jet aircraft departures on Runway 19L and jet aircraft arrivals on Runway 1R.
- This data compiled from the noise office software provided by Casper Airport Solutions and June differ from official FAA monthly traffic counts.