

Tampa International Airport

Monthly Noise Monitoring Office Report

April 2025



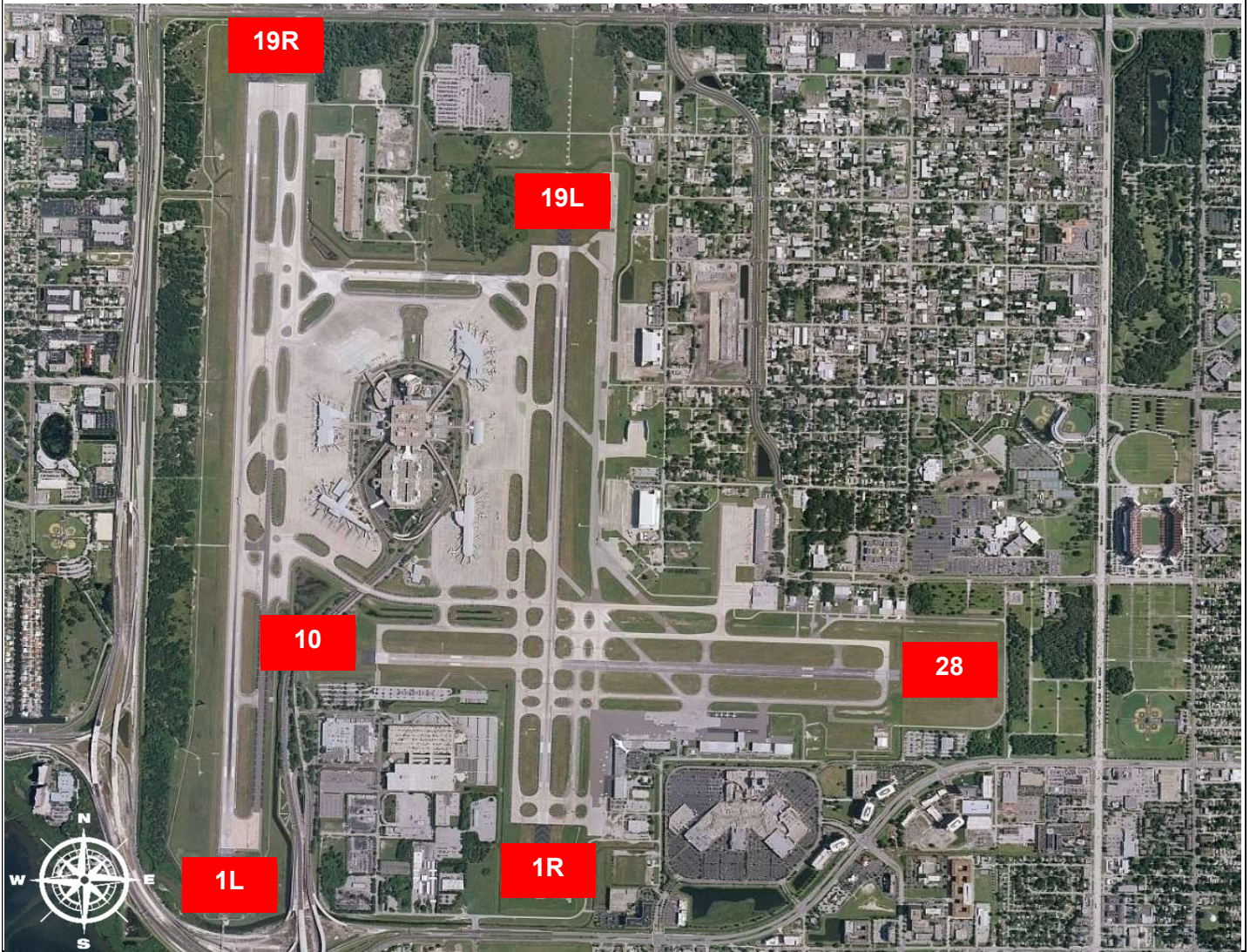
Monthly Noise Report	
Expected Operational Changes	Community Outreach
<ul style="list-style-type: none"> Scheduled Runway closures for April: <ul style="list-style-type: none"> 4/7/25 Rwy 10/28, 0700-1100 4/8/25 Rwy 1L/19R, 0800-1200 4/9/25 Rwy 1R/19L & 10/28, 0800-1200 4/11 & 4/12/25 Rwy 10/28, 0300-1200 	<ul style="list-style-type: none"> A Community Noise Forum Meeting is scheduled to be held virtually on Thursday, June 19th, 2025 at 3:00 PM.
For more information please visit: www.tampaairport.com/noise-abatement or call: (813) 870-7843	

Deviations		
North of Airport	West of Airport	South of Airport
<i>1L / 1R Departures – Westbound Aircraft Turns Below 3,000 ft.</i>	<i>Runway 10-28 Arrivals / Departures</i>	<i>Runway 1R Jet Arrivals and Runway 19L Commercial Jet Departures</i>
Jet Turns Below 3,000 ft: 613 Deviation Percentage of Total North Flow Departures: 3.2% Compliance: 96.8%	Total Rwy 10 Jet Arrivals: 7 Total Rwy 28 Jet Departures: 20 Deviation Percentage of Total Jet Operations: 0.1% Compliance: 99.9%	Total Rwy 1R Jet Landings: 603 Total Rwy 19L Commercial Jet Departures: 214 Combined Deviation Percentage of Total Jet Operations⁴: 4.3% Combined Compliance⁴: 95.7%

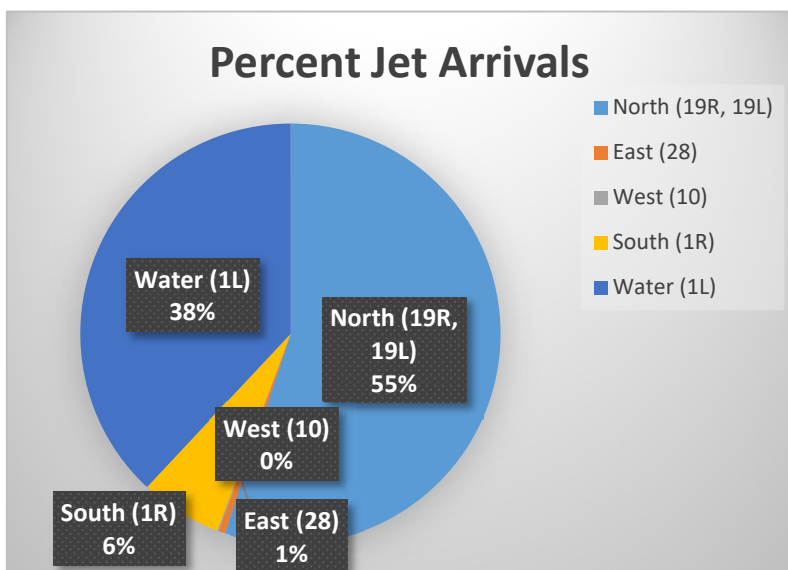
Operational Totals for April 2025	
Total Jet Operations (All Runways):	19,090
Total Prop/Turboprop Operations (All Runways):	1,809
Total North Flow Operations All Aircraft (Runway 1L & 1R):	9,040
Total South Flow Operations All Aircraft (Runway 19R & 19L):	11,531
All Aircraft Operations 7 a.m. -10 p.m.³:	17,800
All Aircraft Operations 10 p.m. – 7a.m.³:	3,335
Commercial Airline Deviations	33
Construction/Maintenance-Related Deviations¹:	165
FAA Assigned Deviations² (corporate & commercial jet combined):	190
General Aviation Deviations⁵:	448
Noise Complaints⁶ (Month/Year):	157 / 1,020

Key
¹ Includes: Scheduled and unscheduled runway closures
² Includes: Medivac flights, volume/wake separation, aircraft emergencies, and wildlife strike inspections
³ Flights operating at exactly 7a.m. and 10p.m. are included in both figures
⁴ Combined deviation percentages for both runways
⁵ "GA Jets" deviation code accounts for FAA Assigned or Pilot Request for General Aviation
⁶ Duplicate complaints for the same flight from the same household are excluded from totals

Runway Map



Percentage of Jet Arrivals by Runway End (April 2025)



- Total complaints based on complaints logged as of [Apr 30, 2025].
- Commercial Jet Aircrafts are: Boeing, Airbus, McDonal Douglas, Douglas Corporation, Bombardier and Embraer commercial aircraft.
- Pilot Request Deviations include commercial jet aircraft departures on Runway 19L and jet aircraft arrivals on Runway 1R.
- This data compiled from the noise office software provided by Casper Airport Solutions and may differ from official FAA monthly traffic counts.