

Tampa International Airport

Monthly Noise Monitoring Office Report

March 2025

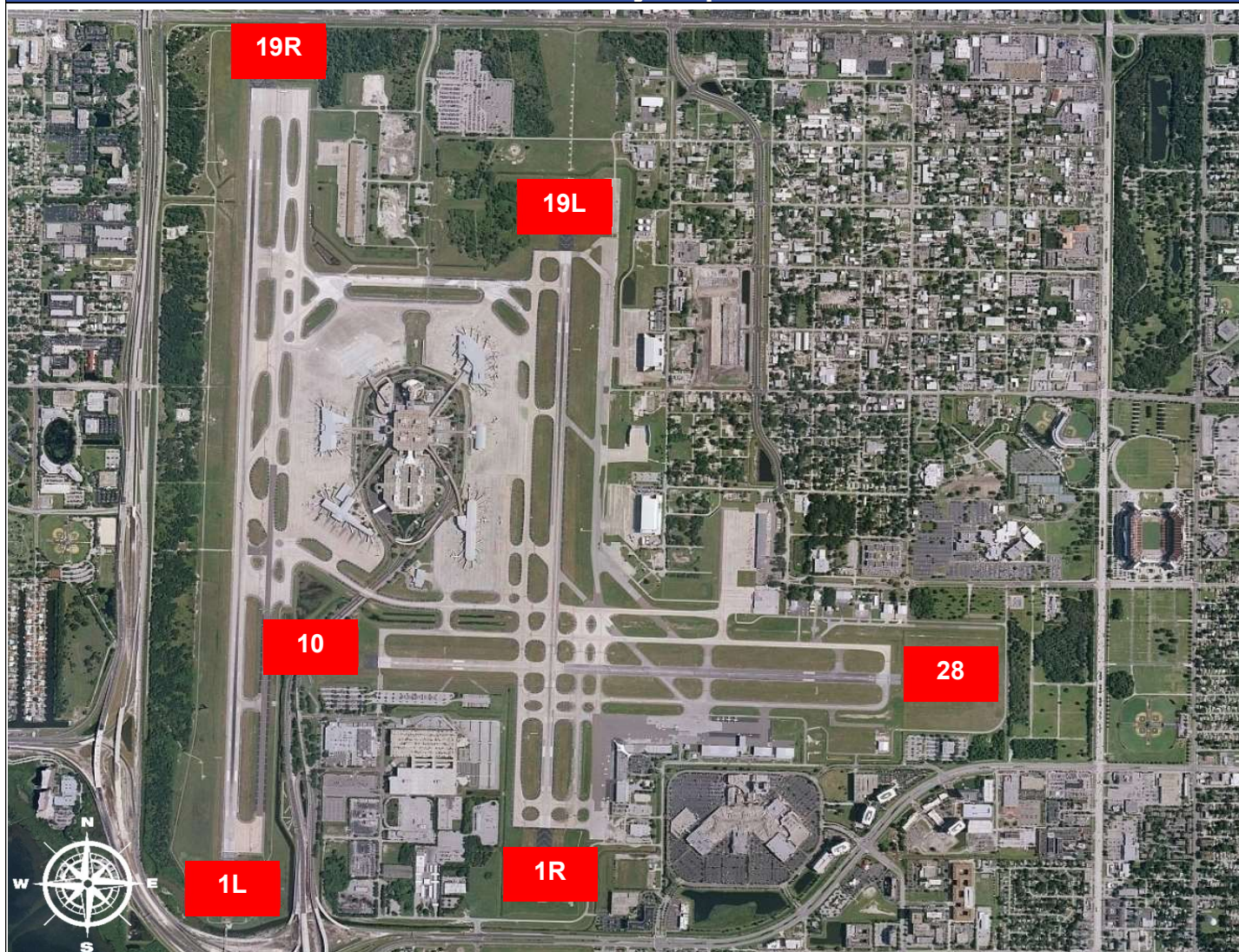


Monthly Noise Report	
Expected Operational Changes	Community Outreach
<ul style="list-style-type: none"> Scheduled Runway closures for April: <ul style="list-style-type: none"> 4/7/25 Rwy 10/28, 0700-1100 4/8/25 Rwy 1L/19R, 0800-1200 4/9/25 Rwy 1R/19L & 10/28, 0800-1200 4/11 & 4/12/25 Rwy 10/28, 0300-1200 	<ul style="list-style-type: none"> A Community Noise Forum Meeting is scheduled to be held virtually on Wednesday, April 16th, 2025 at 9:30 am.
For more information please visit: www.tampaairport.com/noise-abatement or call: (813) 870-7843	

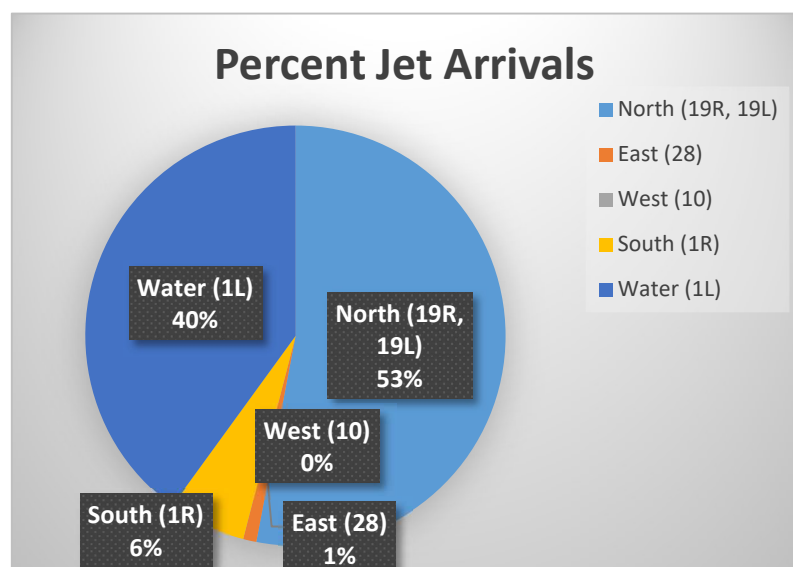
Deviations		
North of Airport	West of Airport	South of Airport
1L / 1R Departures – Westbound Aircraft Turns Below 3,000 ft.	Runway 10-28 Arrivals / Departures	Runway 1R Jet Arrivals and Runway 19L Commercial Jet Departures
Jet Turns Below 3,000 ft: 531 Deviation Percentage of Total North Flow Departures: 2.6% Compliance: 97.4%	Total Rwy 10 Jet Arrivals: 6 Total Rwy 28 Jet Departures: 38 Deviation Percentage of Total Jet Operations: 0.2% Compliance: 99.8%	Total Rwy 1R Jet Landings: 659 Total Rwy 19L Commercial Jet Departures: 191 Combined Deviation Percentage of Total Jet Operations⁴: 4.1% Combined Compliance⁴: 95.9%

Operational Totals for March 2025		Key
Total Jet Operations (All Runways):	20,664	¹ Includes: Scheduled and unscheduled runway closures ² Includes: Medivac flights, volume/wake separation, aircraft emergencies, and wildlife strike inspections ³ Flights operating at exactly 7a.m. and 10p.m. are included in both figures ⁴ Combined deviation percentages for both runways ⁵ "GA Jets" deviation code accounts for FAA Assigned or Pilot Request for General Aviation ⁶ Duplicate complaints for the same flight from the same household are excluded from totals
Total Prop/Turboprop Operations (All Runways):	1,603	
Total North Flow Operations All Aircraft (Runway 1L & 1R):	10,328	
Total South Flow Operations All Aircraft (Runway 19R & 19L):	11,521	
All Aircraft Operations 7 a.m. -10 p.m. ³ :	18,993	
All Aircraft Operations 10 p.m. – 7a.m. ³ :	3,551	
Commercial Airline Deviations	32	
Construction/Maintenance-Related Deviations ¹ :	69	
FAA Assigned Deviations ² (corporate & commercial jet combined):	259	
General Aviation Deviations ⁵ :	534	
Noise Complaints ⁶ (Month/Year):	270 / 661	

Runway Map



Percentage of Jet Arrivals by Runway End (March 2025)



- Total complaints based on complaints logged as of [Mar 31, 2025].
- Commercial Jet Aircrafts are: Boeing, Airbus, McDonald Douglas, Douglas Corporation, Bombardier and Embraer commercial aircraft.
- Pilot Request Deviations include commercial jet aircraft departures on Runway 19L and jet aircraft arrivals on Runway 1R.
- This data compiled from the noise office software provided by Casper Airport Solutions and may differ from official FAA monthly traffic counts.