

Tampa International Airport

Monthly Noise Monitoring Office Report

January 2025

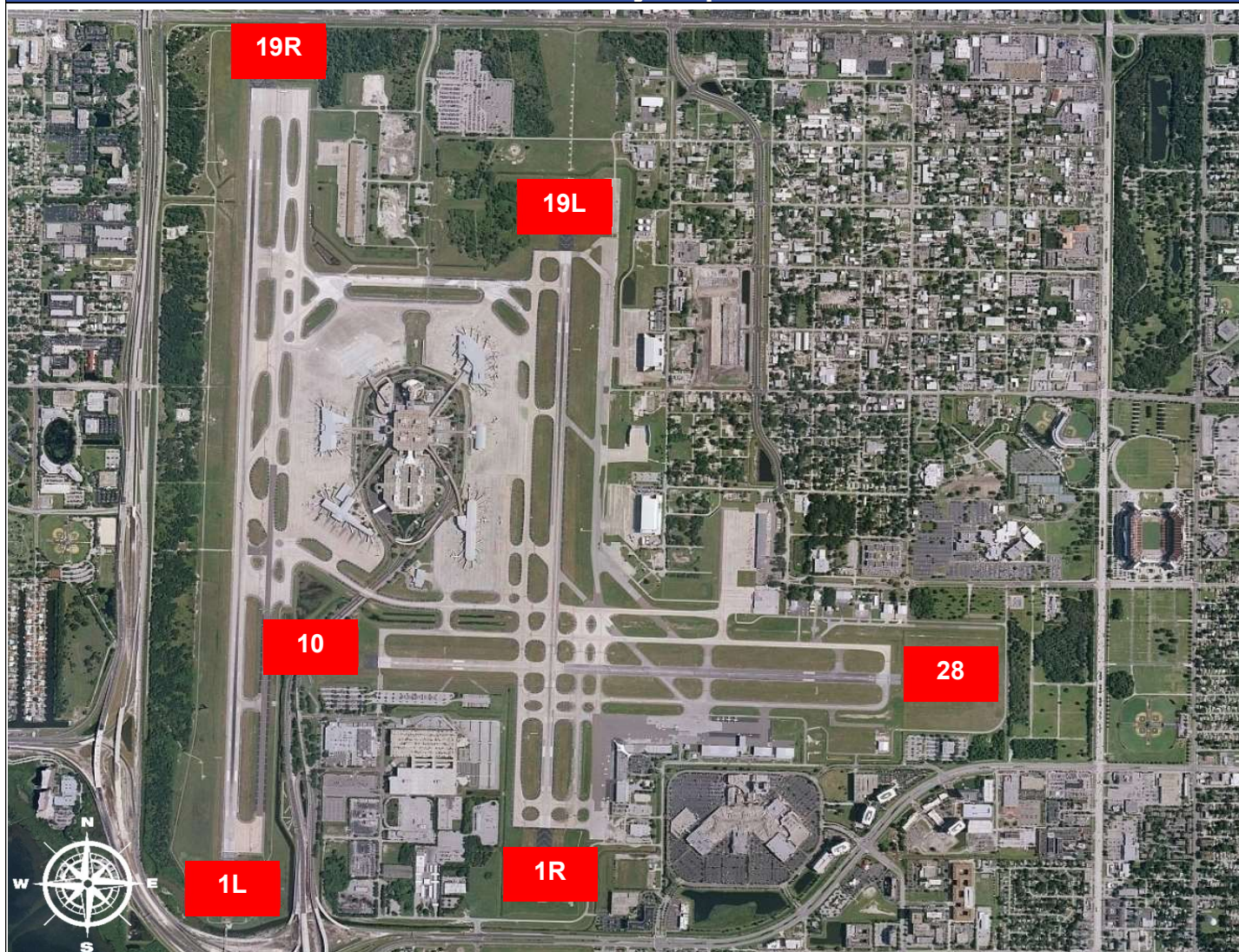


Monthly Noise Report	
Expected Operational Changes	Community Outreach
<ul style="list-style-type: none"> Closure of 1R/19L beginning Jan 20th through Feb 4th Runway closures anticipated during FAA Inspection – week of Feb 10-14 	<ul style="list-style-type: none"> The next Community Noise Forum Meeting will be held virtually on Wednesday, February 5th, 2025 at 9:30 am.
For more information please visit: www.tampaairport.com/noise-abatement or call: (813) 870-7843	

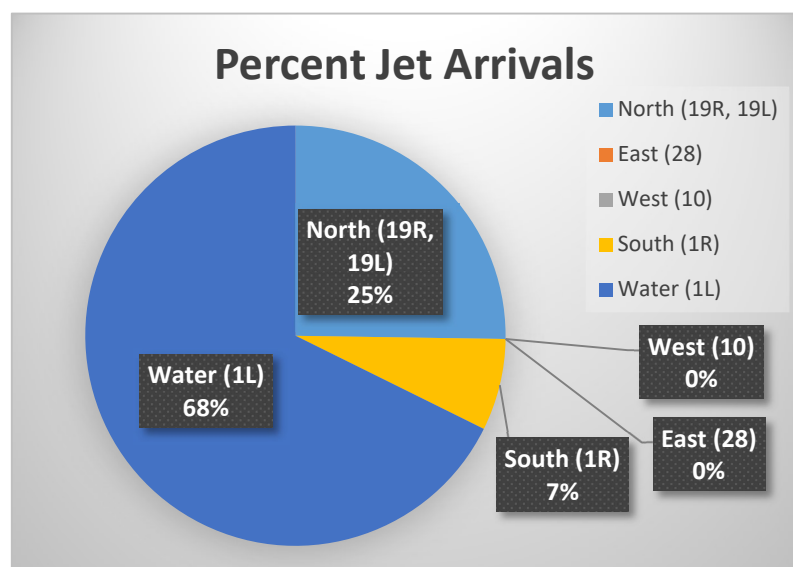
Deviations		
North of Airport	West of Airport	South of Airport
1L / 1R Departures – Westbound Aircraft Turns Below 3,000 ft.	Runway 10-28 Arrivals / Departures	Runway 1R Jet Arrivals and Runway 19L Commercial Jet Departures
Jet Aircraft Turns Below 3,000 ft.: 1,717 Deviation Percentage of Total North Flow Departures: 10.3% Compliance: 89.7%	Total Rwy 10 Jet Arrivals: 9 Total Rwy 28 Jet Departures: 161 Deviation Percentage of Total Jet Operations: 1.0% Compliance: 99.0%	Total Rwy 1R Jet Landings: 577 Total Rwy 19L Commercial Jet Departures: 119 Combined Deviation Percentage of Total Jet Operations⁴: 4.2% Combined Compliance⁴: 95.8%

Operational Totals for January 2025		Key
Total Jet Operations (All Runways):	16,691	¹ Includes: Scheduled and unscheduled runway closures ² Includes: Medivac flights, volume/wake separation, aircraft emergencies, and wildlife strike inspections ³ Flights operating at exactly 7a.m. and 10p.m. are included in both figures ⁴ Combined deviation percentages for both runways
Total Prop/Turboprop Operations (All Runways):	1,674	
Total North Flow Operations All Aircraft (Runway 1L & 1R):	13,129	
Total South Flow Operations All Aircraft (Runway 19R & 19L):	4,424	
All Aircraft Operations 7 a.m. -10 p.m. ³ :	16,211	
All Aircraft Operations 10 p.m. – 7a.m. ³ :	2,338	
Commercial Airline Deviations	11	
Construction/Maintenance-Related Deviations ¹ :	290	
FAA Assigned Deviations ² (corporate & commercial jet combined):	88	
General Aviation Deviations ⁵ :	477	
Noise Complaints (Month/Year):	118 / 118	

Runway Map



Percentage of Jet Arrivals by Runway End (January 2025)



- **West Runway** Unavailable includes closures for maintenances and emergencies, among other factors.
- Total complaints based on complaints logged as of [January 31, 2025].
- Commercial Jet Aircrafts are: Boeing, Airbus, McDonald Douglas, Douglas Corporation, Bombardier and Embraer commercial aircraft.
- Pilot Request Deviations include commercial jet aircraft departures on Runway 19L and jet aircraft arrivals on Runway 1R.
- This data compiled from the noise office software provided by Casper Airport Solutions and may differ from official FAA monthly traffic counts.