

Tampa International Airport

Monthly Noise Monitoring Office Report

February 2025

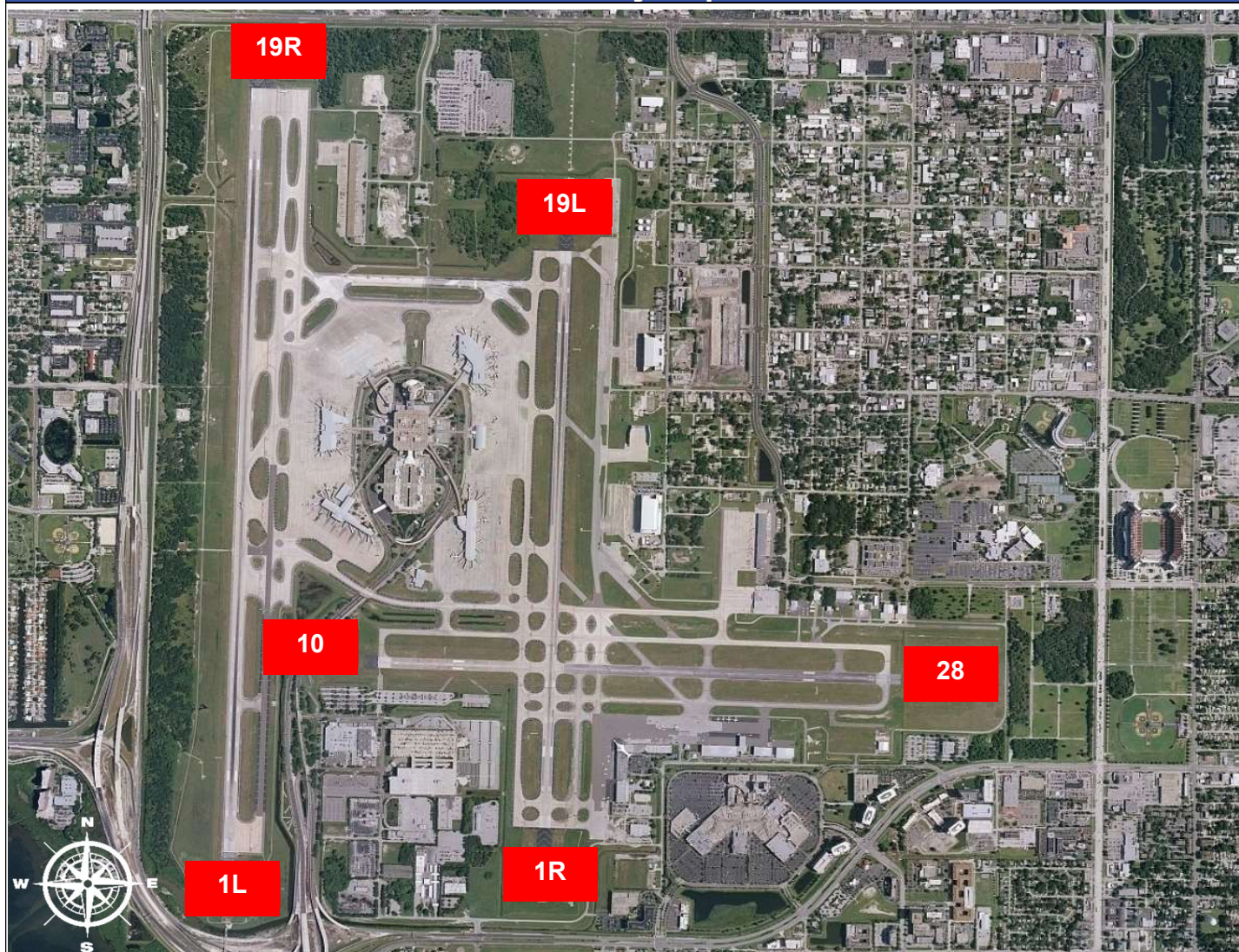


Monthly Noise Report	
Expected Operational Changes	Community Outreach
<ul style="list-style-type: none"> Runway closures conducted during FAA Inspection – week of Feb 10-14 	<ul style="list-style-type: none"> A Community Noise Forum Meeting was offered and held virtually on Wednesday, February 5th, 2025 at 9:30 am.
For more information please visit: www.tampaairport.com/noise-abatement or call: (813) 870-7843	

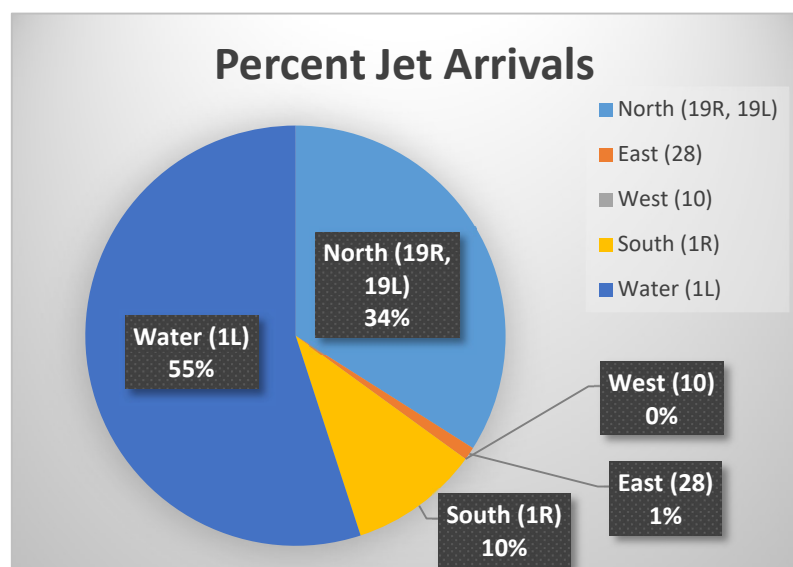
Deviations		
North of Airport	West of Airport	South of Airport
1L / 1R Departures – Westbound Aircraft Turns Below 3,000 ft.	Runway 10-28 Arrivals / Departures	Runway 1R Jet Arrivals and Runway 19L Commercial Jet Departures
Jet Turns Below 3,000 ft: 888 Deviation Percentage of Total North Flow Departures: 5.3% Compliance: 94.7%	Total Rwy 10 Jet Arrivals: 6 Total Rwy 28 Jet Departures: 55 Deviation Percentage of Total Jet Operations: 0.4% Compliance: 99.6%	Total Rwy 1R Jet Landings: 846 Total Rwy 19L Commercial Jet Departures: 125 Combined Deviation Percentage of Total Jet Operations⁴: 5.8% Combined Compliance⁴: 94.2%

Operational Totals for February 2025		Key
Total Jet Operations (All Runways):	16,654	¹ Includes: Scheduled and unscheduled runway closures ² Includes: Medivac flights, volume/wake separation, aircraft emergencies, and wildlife strike inspections ³ Flights operating at exactly 7a.m. and 10p.m. are included in both figures ⁴ Combined deviation percentages for both runways ⁵ "GA Jets" deviation code accounts for FAA Assigned or Pilot Request for General Aviation ⁶ Duplicate complaints for the same flight from the same household are excluded from totals
Total Prop/Turboprop Operations (All Runways):	1,691	
Total North Flow Operations All Aircraft (Runway 1L & 1R):	11,765 (65%)	
Total South Flow Operations All Aircraft (Runway 19R & 19L):	6,112 (35%)	
All Aircraft Operations 7 a.m. -10 p.m. ³ :	16,014	
All Aircraft Operations 10 p.m. – 7a.m. ³ :	2,473	
Commercial Airline Deviations	22	
Construction/Maintenance-Related Deviations ¹ :	238	
FAA Assigned Deviations ² (corporate & commercial jet combined):	277	
General Aviation Deviations ⁵ :	494	
Noise Complaints ⁶ (Month/Year):	272 / 387	

Runway Map



Percentage of Jet Arrivals by Runway End (February 2025)



- **West Runway** Unavailable includes closures for maintenances and emergencies, among other factors.
- Total complaints based on complaints logged as of [February 28, 2025].
- Commercial Jet Aircrafts are: Boeing, Airbus, McDonnell Douglas, Douglas Corporation, Bombardier and Embraer commercial aircraft.
- Pilot Request Deviations include commercial jet aircraft departures on Runway 19L and jet aircraft arrivals on Runway 1R.
- This data compiled from the noise office software provided by Casper Airport Solutions and may differ from official FAA monthly traffic counts.