

Tampa International Airport Monthly Noise Monitoring Office Report

November 2016



Total Operations
(Runway 19R,19L,1L,1R):
15,354

Total South Flow Operations
(Runway 19R and 19L):
2,538

Total North Flow Operations
(Runway 1L and 1R):
12,816

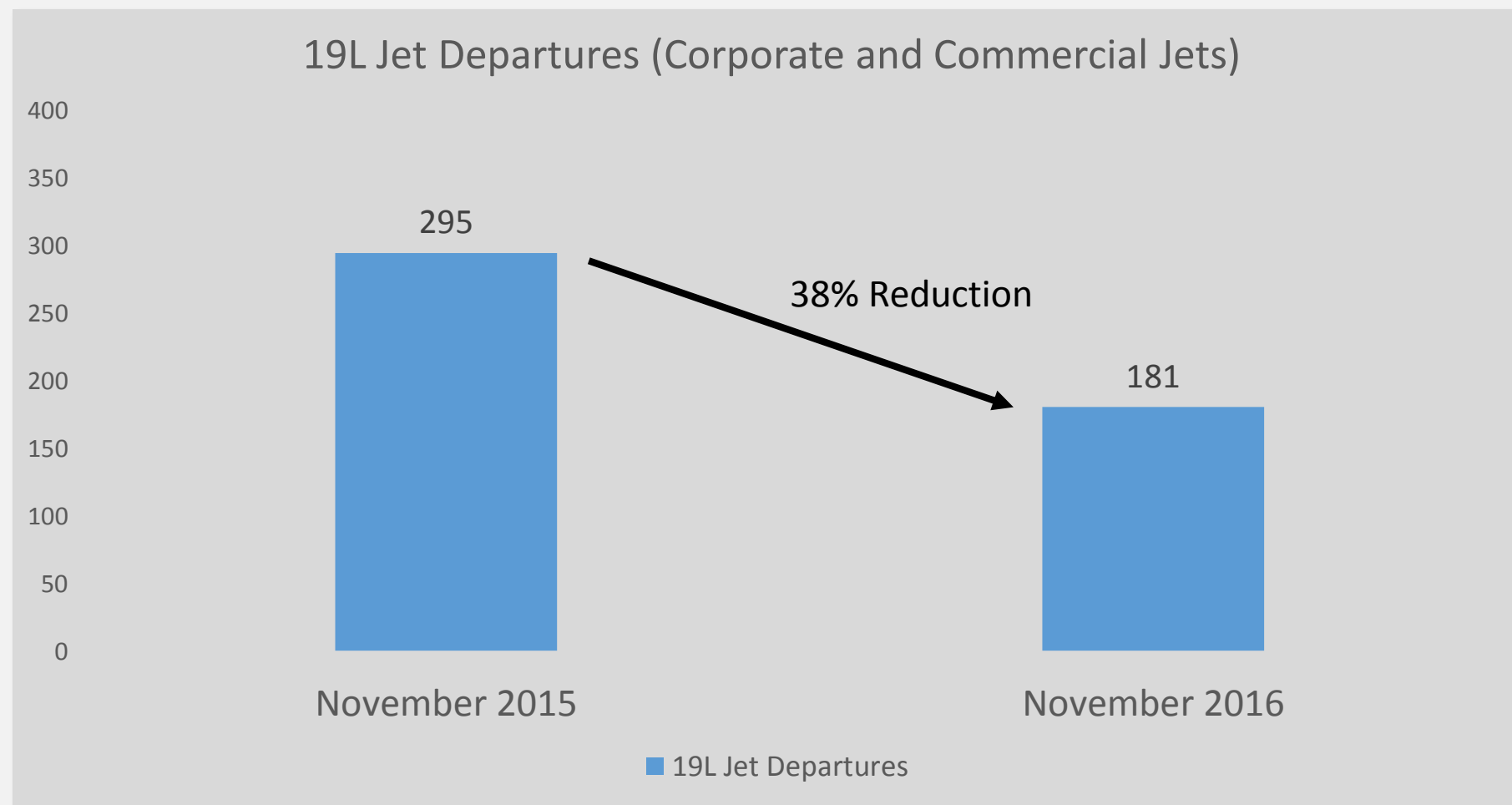
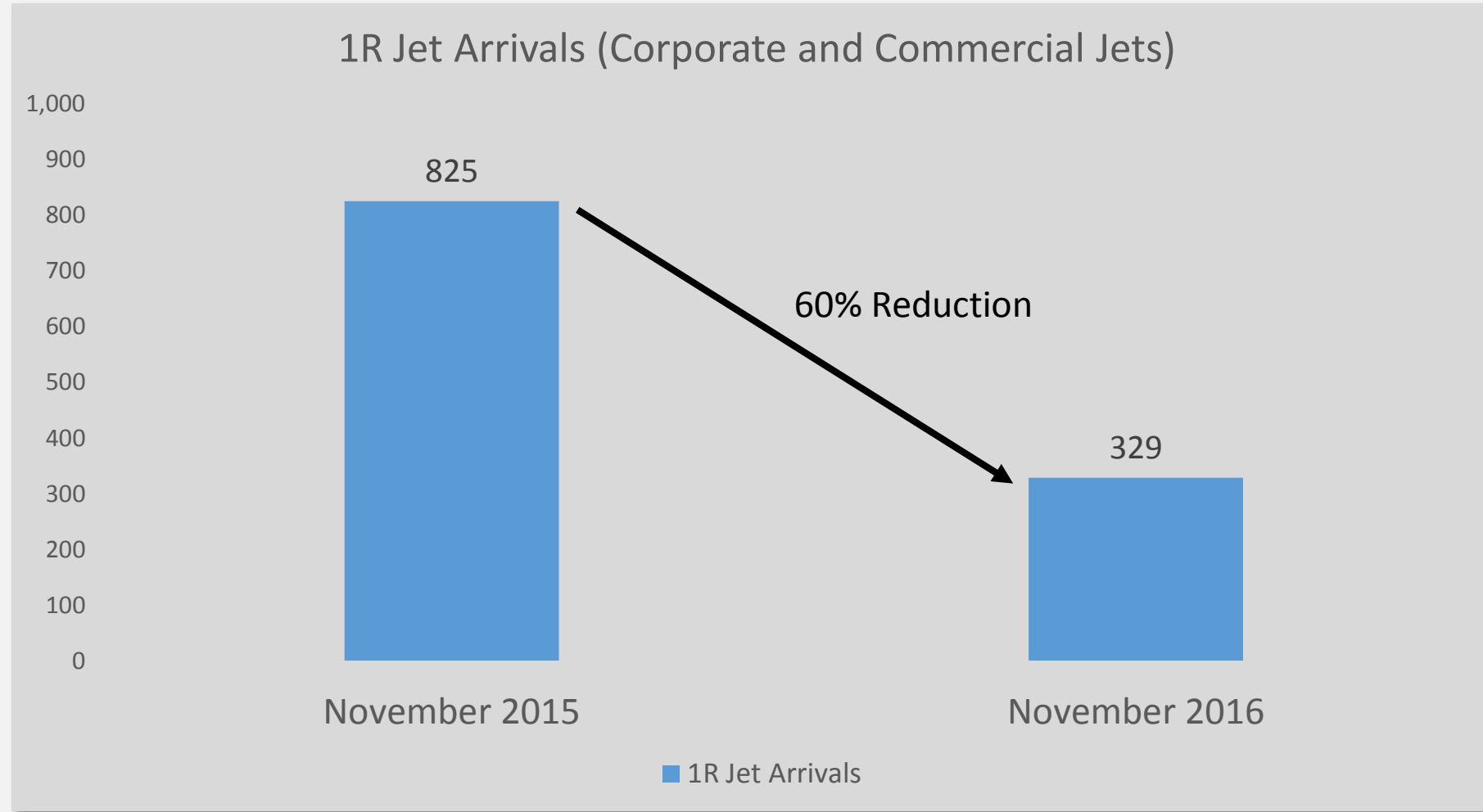
Total Commercial Jet Arrivals Runway 1R:
98

Total Commercial Jet Departures Runway 19L:
78

Total Commercial Pilot Request Deviations
(Runway 19L Departures and Runway 1R Arrivals):
13

Total Commercial Deviations – West Runway Unavailable*:
132

Total Commercial FAA Assigned Deviations:
31



Total Corporate Jet Arrivals Runway 1R:
231

Total Corporate Jet Pilot Request Deviations:
230

Complaints:
November 2016: 264
November 2015: 99
YTD 2016: 1,043
YTD 2015: 568

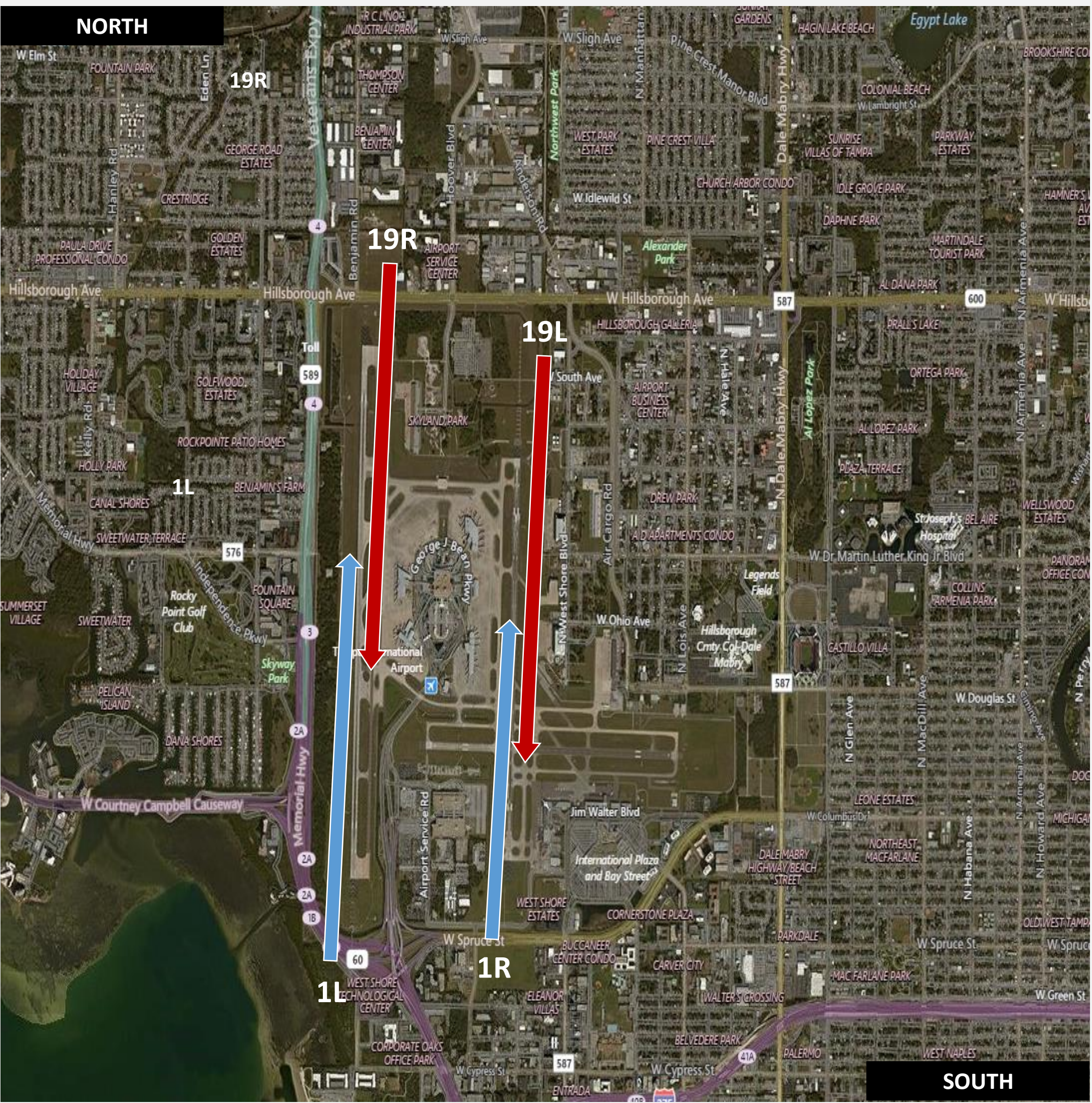
Top Complaints:
Runway 1R Commercial Jet Arrivals
Runway 19R Departures

- Monthly Noise Report:**
- North flow operations increased 26% compared to November 2015.
 - Jet landings on Runway 1R were **down 60%** YOY for the month of November despite increased north flow operations.
 - Jet departures on Runway 19L were **down 38%** YOY.
 - Next Community Noise Consortium meeting is scheduled for January 12, 2017 from 5:30 p.m. until 6:30 p.m.

Contact Us:
Online: www.tampaairport.com/noise-abatement
Phone: (813) 870-7843

*Includes: Scheduled runway closures, unscheduled runway closures, aircraft emergencies and wildlife strike inspections.

Airport Map and Notes:



NOTES:

The Airport operates two primary north-south runways. Arrival and departure directions on those runways are determined by wind direction. When winds are out of the north, aircraft arrive and takeoff to the north (referred to as a north flow). When winds are out of the south, aircraft arrive and takeoff to the south (referred to as a south flow). Runway 19R and 19L are the runway designations for 'south flow' operations and Runway 1R and 1L are the runway designations for 'north flow' operations.

Runway 1R/19L (the Airport's east runway) is considered noise sensitive.

The Airport does not control aircraft in flight or on the ground. The Federal Aviation Administration has exclusive authority over the movement of aircraft on the ground and throughout the National Airspace System.

Contact Us:

Online: www.tampaairport.com/noise-abatement
Phone: (813) 870-7843

- Total Complaints based on complaints logged as of November 30, 2016.
- Commercial jet aircraft are: Boeing, Airbus, McDonald Douglas, Douglas Corporation, Bombardier and Embraer commercial aircraft.
- Pilot Request Deviations includes commercial jet aircraft departures on Runway 19L and commercial jet aircraft arrivals on Runway 1R.
- West Runway Unavailable includes closures for maintenances and emergencies, among other factors.
- This data is compiled from the noise office software provided by Harris Corp. and may differ from official FAA monthly traffic counts.