

Tampa International Airport Monthly Noise Office Report

March 2016



Total Operations
(Runway 19R,19L,1L,1R):
18,112

Total South Flow Operations
(Runway 19R and 19L):
12,888

Total North Flow Operations
(Runway 1L and 1R):
5,224

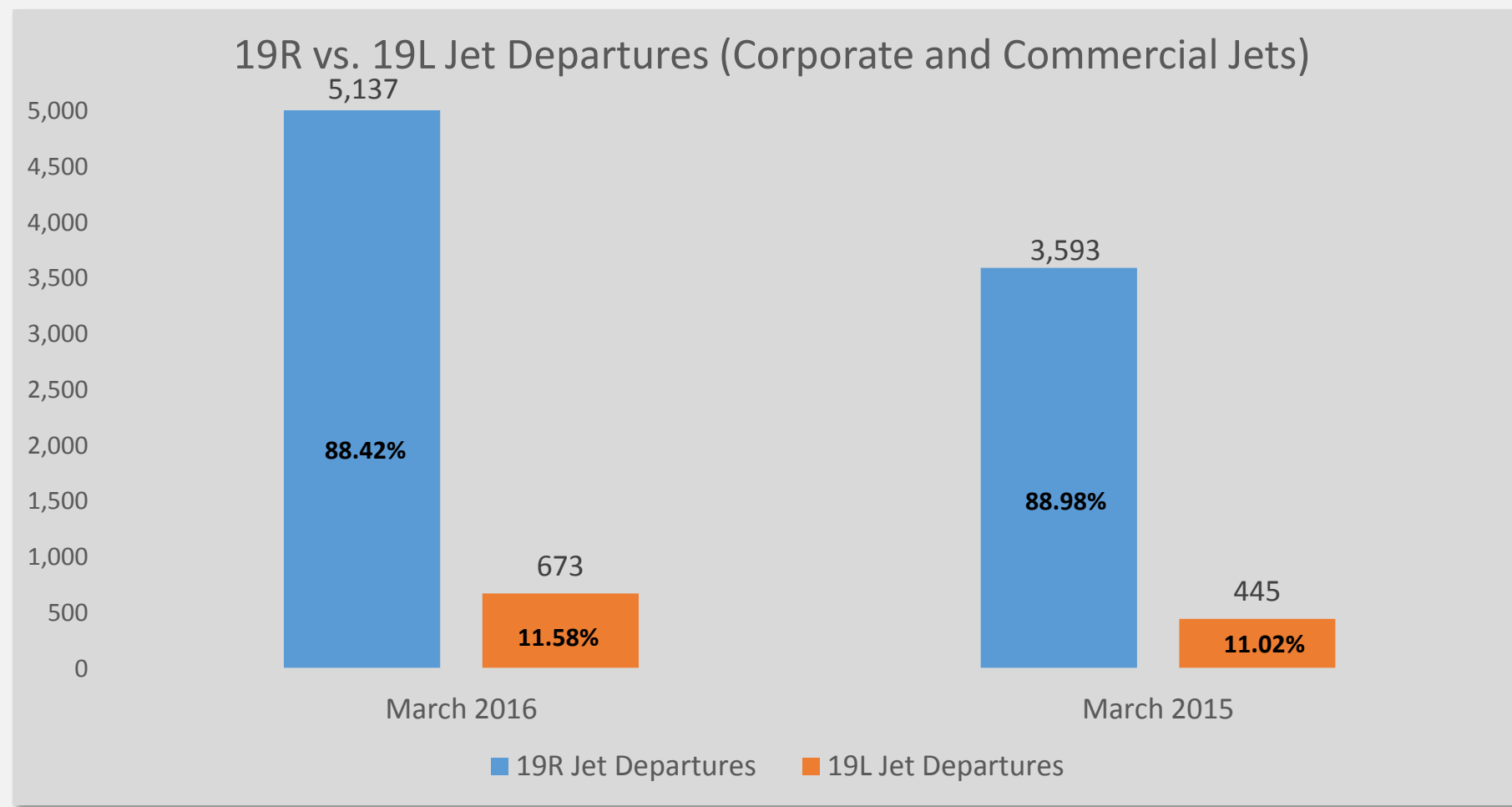
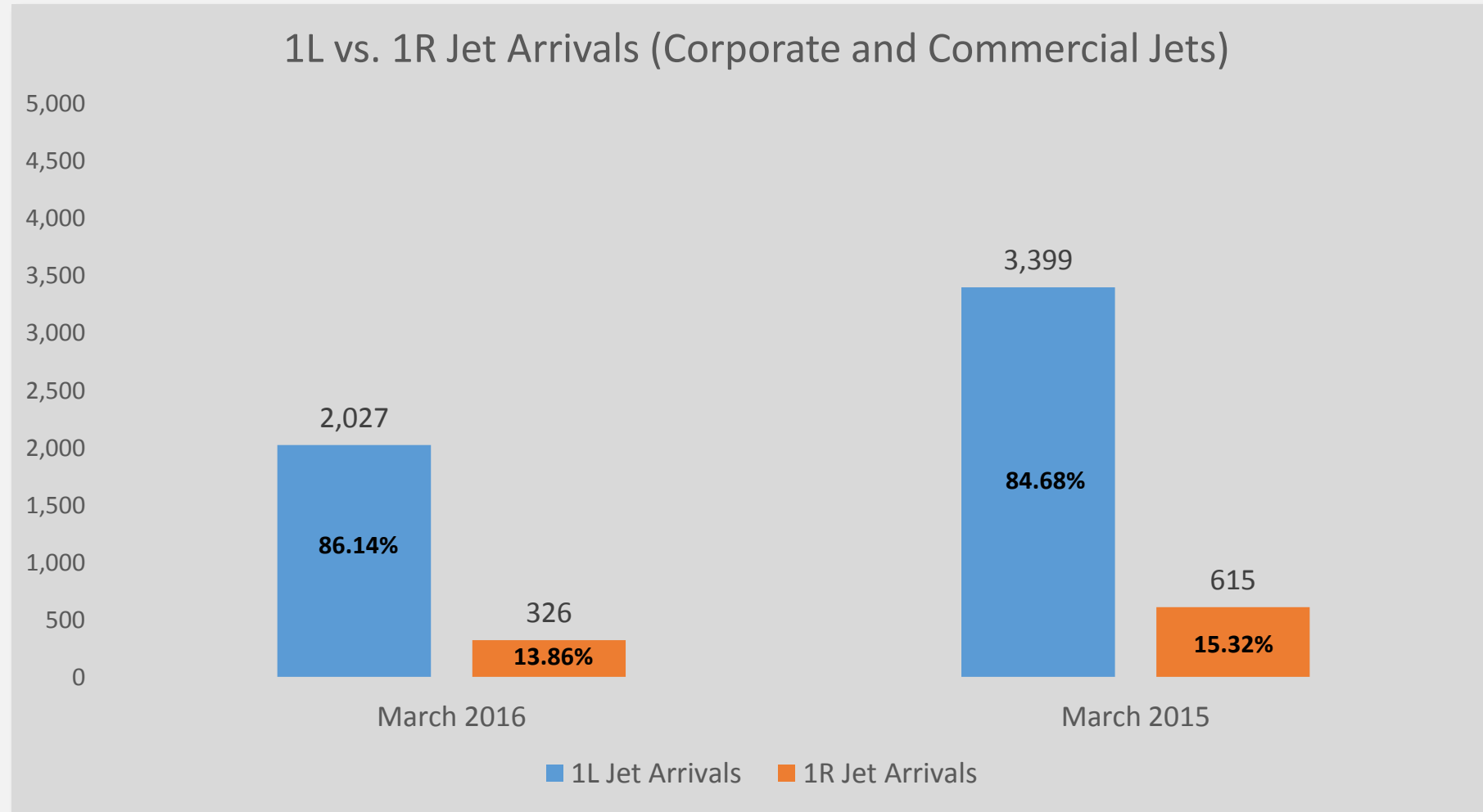
Total Commercial Jet Arrivals Runway 1R:
181

Total Commercial Jet Departures Runway 19L:
140

Total Commercial Pilot Request Deviations
(Runway 19L Departures and Runway 1R Arrivals):
17

Total Deviations – West Runway Unavailable:
141

Total FAA Assigned Deviations:
47



Total Complaints Received:
140

Top Complaints:
Runway 1R Commercial Jet Arrivals
Runway 1R Corporate Jet Arrivals

Monthly Noise Report:

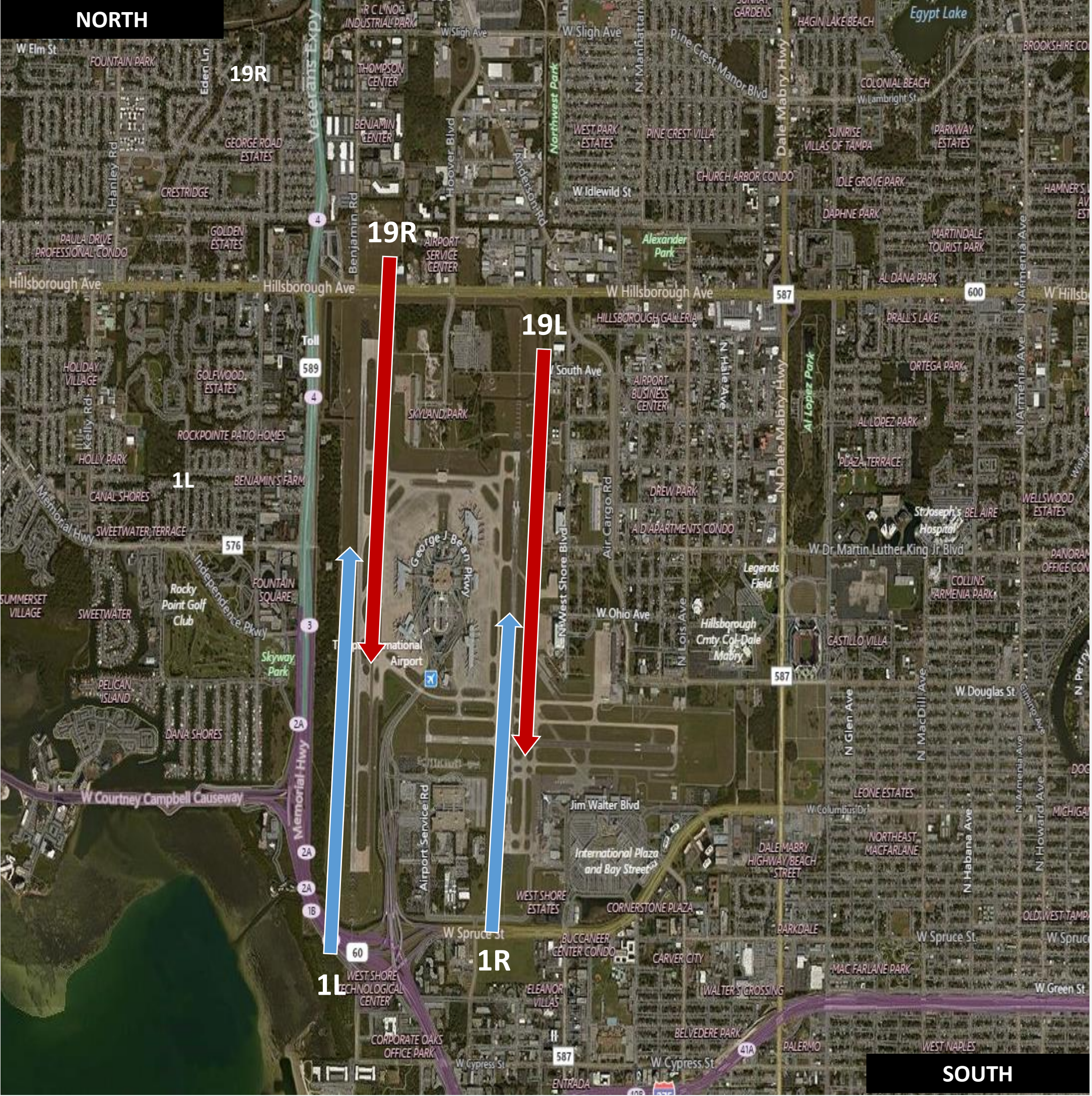
- Last Community Noise Consortium meeting held on March 10, 2016.
- Enhanced online complaint and flight tracking tool launched on March 10, 2016.
- Next Community Noise Consortium meeting will be held on May 12, 2016 at 5:30 p.m.
- Deviation information is now posted online for commercial jet departures on Runway 19L and commercial jet arrivals on Runway 1R.

Contact Us:

Online: www.tampaairport.com/noise-abatement

Phone: (813) 870-7843

Airport Map and Notes:



NOTES:

The Airport operates two primary north-south runways. Arrival and departure directions on those runways are determined by wind direction. When winds are out of the north, aircraft arrive and takeoff to the north (referred to as a north flow). When winds are out of the south, aircraft arrive and takeoff to the south (referred to as a south flow). Runway 19R and 19L are the runway designations for 'south flow' operations and Runway 1R and 1L are the runway designations for 'north flow' operations.

Runway 1R/19L (the Airport's east runway) is considered noise sensitive.

The Airport does not control aircraft in flight or on the ground. The Federal Aviation Administration has exclusive authority over the movement of aircraft on the ground and throughout the national airspace system.

During the Taxiway 'J' airfield construction project:

- Airside 'A' jet aircraft (United, Spirit, JetBlue and Alaska) may be assigned Runway 1R for arrival when the airport is operating in a north arrival flow, Monday-Friday, between 10am and 6pm.
- Corporate jet aircraft may be assigned Runway 1R for arrival when the airport is operating in a north arrival flow.
- Taxiway 'J' construction project began in February of 2015 with completion scheduled for September of 2016.

Contact Us:

Online: www.tampaairport.com/noise-abatement
Phone: (813) 870-7843

-Total Complaints based on complaints logged as of March 31, 2016.
 -Commercial jet aircraft are: Boeing, Airbus, McDonald Douglas, Douglas Corporation, Bombardier and Embraer commercial aircraft.
 -Pilot Request Deviations includes commercial jet aircraft departures on Runway 19L and commercial jet aircraft arrivals on Runway 1R.
 -West Runway Unavailable includes closures for maintenances and emergencies, among other factors.
 -This data is compiled from the noise office software provided by Harris Corp. and may differ from official FAA monthly traffic counts.

Tampa International Airport Monthly Noise Office Report

April 2016



Total Operations
(Runway 19R,19L,1L,1R):
16,581

Total South Flow Operations
(Runway 19R and 19L):
8,271

Total North Flow Operations
(Runway 1L and 1R):
8,310

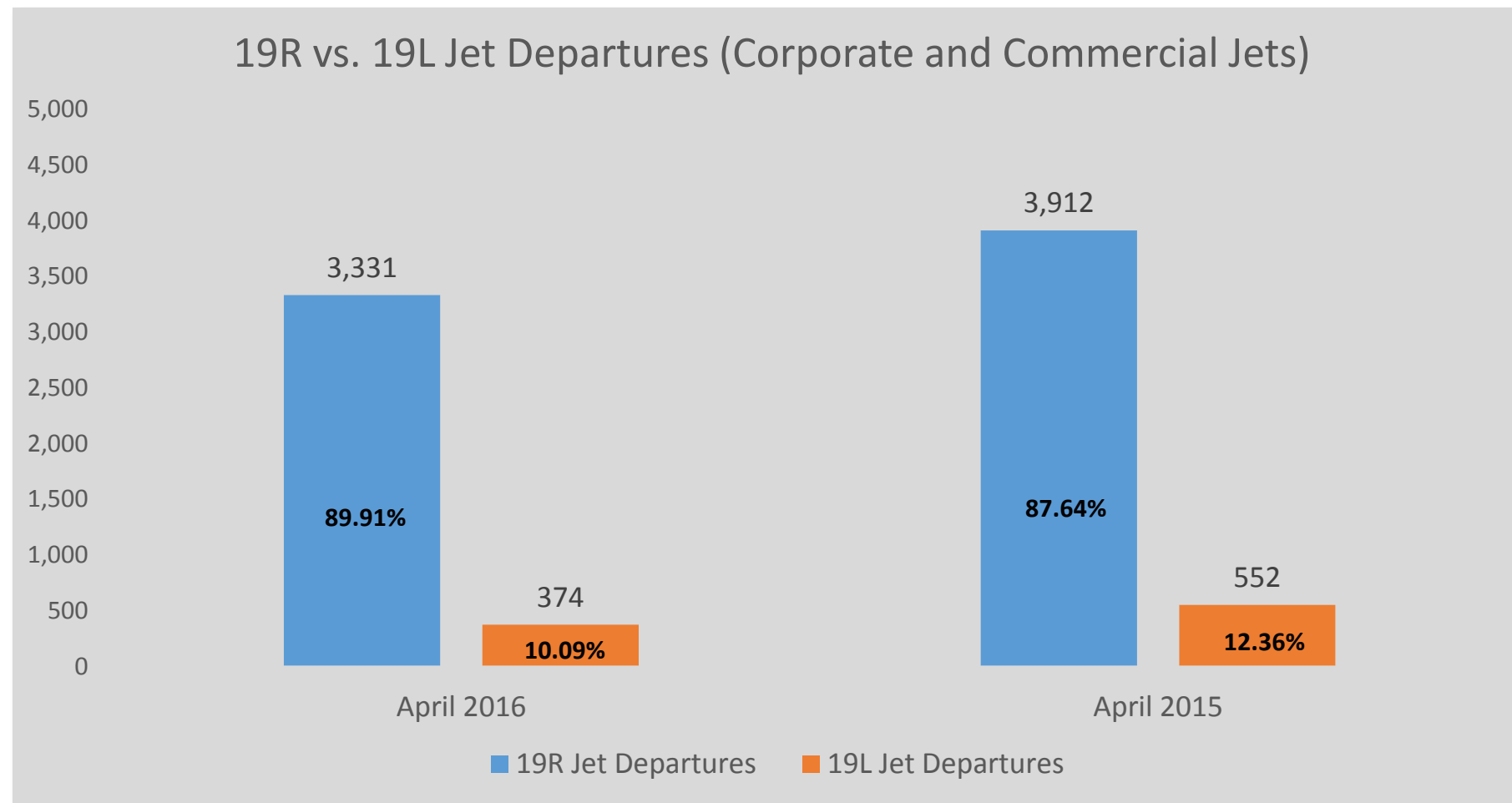
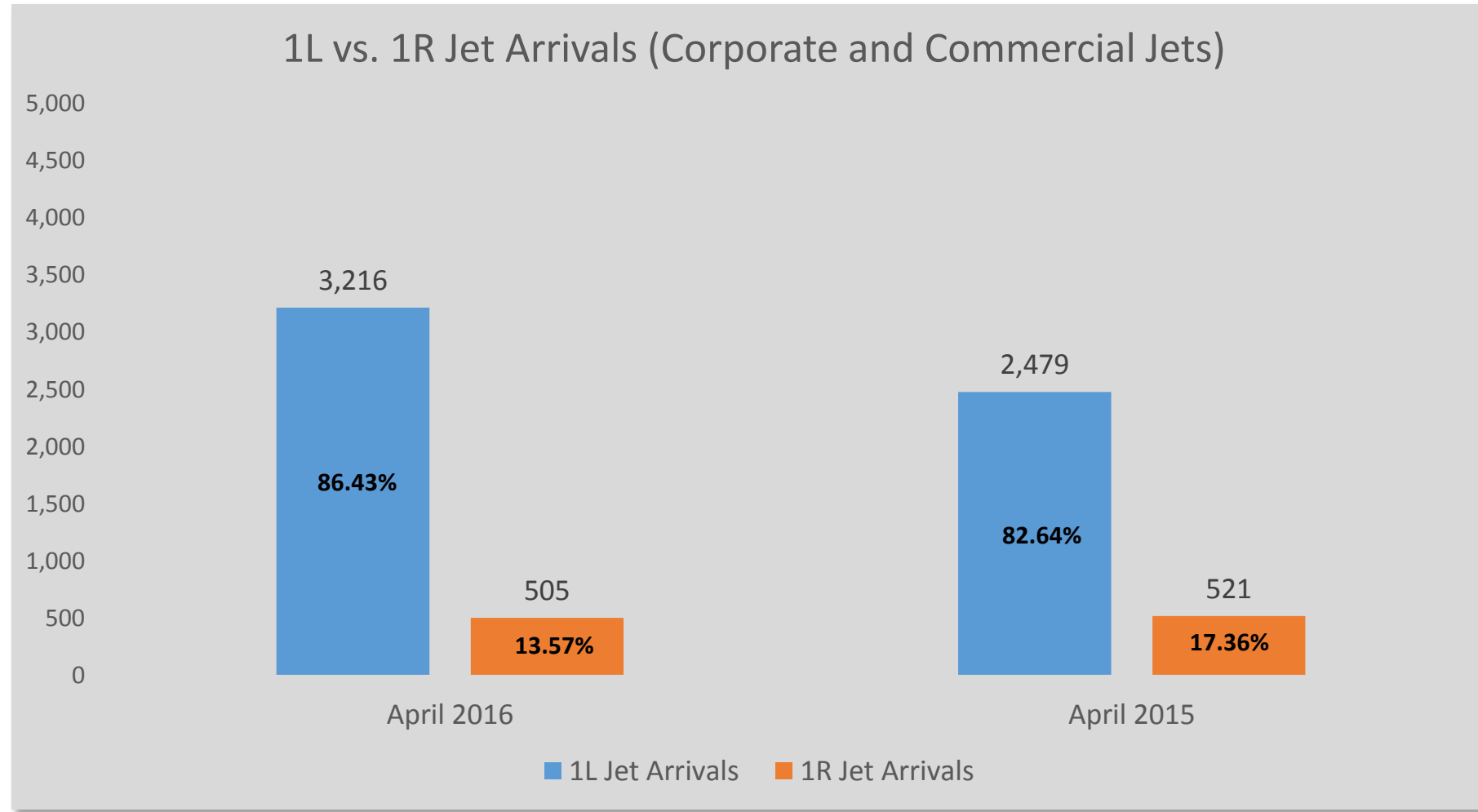
Total Commercial Jet Arrivals Runway 1R:
204

Total Commercial Jet Departures Runway 19L:
101

Total Commercial Pilot Request Deviations
(Runway 19L Departures and Runway 1R Arrivals):
4

Total Deviations – West Runway Unavailable:
120

Total FAA Assigned Deviations:
45



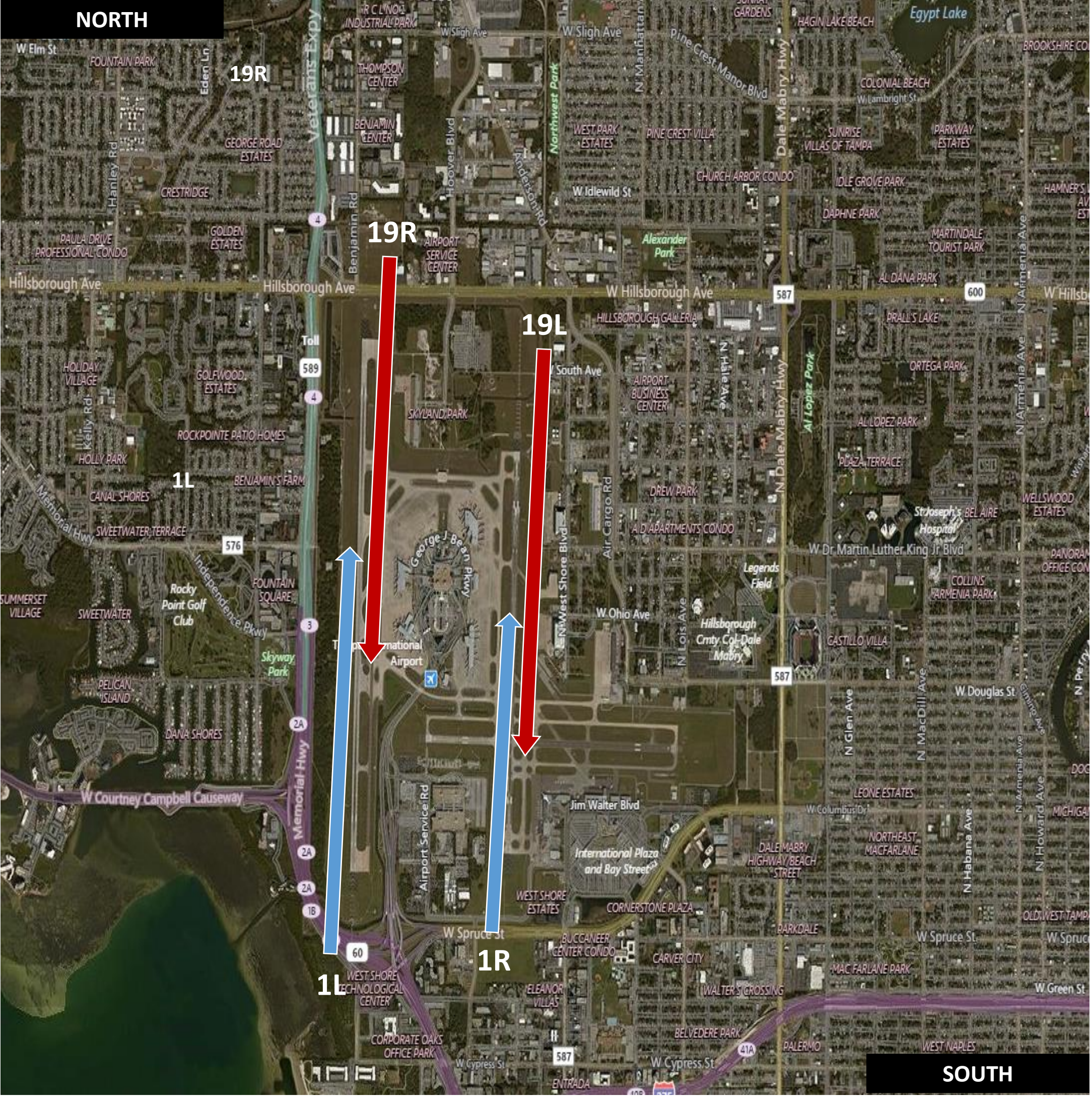
Total Complaints Received:
54

Top Complaints:
Runway 1R Commercial Jet Arrivals
Runway 1R Corporate Jet Arrivals

- Monthly Noise Report:**
- Runway 1R/19L closed from April 25, 2016 through May 9, 2016 for runway slab replacement.
 - Deviation information is now posted online for commercial jet departures on Runway 19L and commercial jet arrivals on Runway 1R.
 - Next Community Noise Consortium meeting will be held on May 12, 2016 at 5:30 p.m.

Contact Us:
Online: www.tampaairport.com/noise-abatement
Phone: (813) 870-7843

Airport Map and Notes:



NOTES:

The Airport operates two primary north-south runways. Arrival and departure directions on those runways are determined by wind direction. When winds are out of the north, aircraft arrive and takeoff to the north (referred to as a north flow). When winds are out of the south, aircraft arrive and takeoff to the south (referred to as a south flow). Runway 19R and 19L are the runway designations for 'south flow' operations and Runway 1R and 1L are the runway designations for 'north flow' operations.

Runway 1R/19L (the Airport's east runway) is considered noise sensitive.

The Airport does not control aircraft in flight or on the ground. The Federal Aviation Administration has exclusive authority over the movement of aircraft on the ground and throughout the national airspace system.

During the Taxiway 'J' airfield construction project:

- Airside 'A' jet aircraft (United, Spirit, JetBlue and Alaska) may be assigned Runway 1R for arrival when the airport is operating in a north arrival flow, Monday-Friday, between 10am and 6pm.
- Corporate jet aircraft may be assigned Runway 1R for arrival when the airport is operating in a north arrival flow, between 10am and 6pm, Monday-Friday.
- Taxiway 'J' construction project began in February of 2015 with completion scheduled for September of 2016.

Contact Us:

Online: www.tampaairport.com/noise-abatement
Phone: (813) 870-7843

-Total Complaints based on complaints logged as of April 30, 2016.
 -Commercial jet aircraft are: Boeing, Airbus, McDonald Douglas, Douglas Corporation, Bombardier and Embraer commercial aircraft.
 -Pilot Request Deviations includes commercial jet aircraft departures on Runway 19L and commercial jet aircraft arrivals on Runway 1R.
 -West Runway Unavailable includes closures for maintenances and emergencies, among other factors.
 -This data is compiled from the noise office software provided by Harris Corp. and may differ from official FAA monthly traffic counts.