



MOMENTUM

Air Service Updates

AirTran Airways

In January, the Tampa Bay area welcomed the return of AirTran Airway's nonstop service of Gulfport/Biloxi.

Air Canada

Also in January, Air Canada increased its number of weekly flights to Montreal and Toronto, and in February will resume weekly seasonal service to Halifax!

[AirTran Airways](#) [Air Canada](#)

FAA Safety Award

In February, the FAA Southern Region awarded Tampa International Airport with the 2009 Runway Safety Partnership Award.

This award was presented to the employees of Tampa International Airport for outstanding work and contributions made in promoting airfield safety and by taking an innovative and proactive approach to runway safety enhancements, which included endless attention to detail regarding airfield marking upgrades, visibility and reflectivity and a record of the relatively minimal number of surface incidents.

February/March 2010

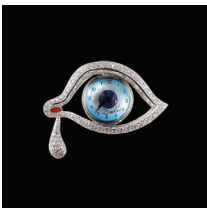


TPA receives the 2009 Runway Safety Partnership Award

Airport Traffic January 2010

(Enplaned and Deplaned)	
Passengers	1,299,058
Domestic	1,263,281
International	35,777

Art in the Airport—Dali: Gems on Tour and Roots

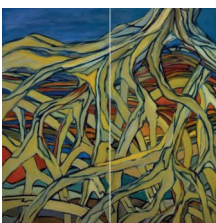


Eye of Time, Salvadore Dali, from Dali: Gems on Tour

Dali: Gems on Tour now on display in the gallery connecting the Landside Terminal and the airport Marriott Hotel.

Enjoy a glimpse at ten reproductions of Dali designed jewelry.

Dali's versatility as an artist gave him the unique ability to seize hold of the themes and myths that obsessed his thoughts, transcribing them into wearable art. Now on display at Tampa International Airport are ten reproductions of Dalí designed jewelry. The jewels will be on display through June 2010.



Yellow Mangroves, Mally Khorasantchi, 2007, part of the new art exhibit: Roots

Roots now on display in the rotunda gallery at Airside A

Landscape painter Mally Khorasantchi's work is now on display at Airside A. The works feature interwoven, enchanting mangrove roots. Khorasantchi's inspiration comes from two different sources; her fascination with the nature that surrounds her and its endless and universal struggle to survive and her German heritage. She immigrated to the United States in 1992 from Germany. Two milestones in 2008 made her rethink her roots: she turned 60 and returned to Germany to exhibit her paintings in a solo exhibition. Khorasantchi said that as she stood in the gallery of her hometown it felt strange. She discovered that America is now her home.